

11000 AND 12000 SERIES

PROFESSIONAL TOGGLE SWITCHES

Distinctive features

B

☐ Applications

These switches are specially manufactured for defence, avionics, space and telecommunications applications.

☐ Approvals and lists



CECC 96201-005
CECC 96201-008

- **QPL** (in Europe) and **MUAHAG** listed
- meeting the requirements of **MIL** standard (MIL 3950)

☐ Robust switches for high specification environments

☐ Toggle action on 2-position models giving smooth mechanical operation

☐ Plastic material with high insulation resistance

☐ Several front panel sealing options

☐ Several locking lever options (12000 series)

☐ Bright chrome, satin chrome or matt black finish

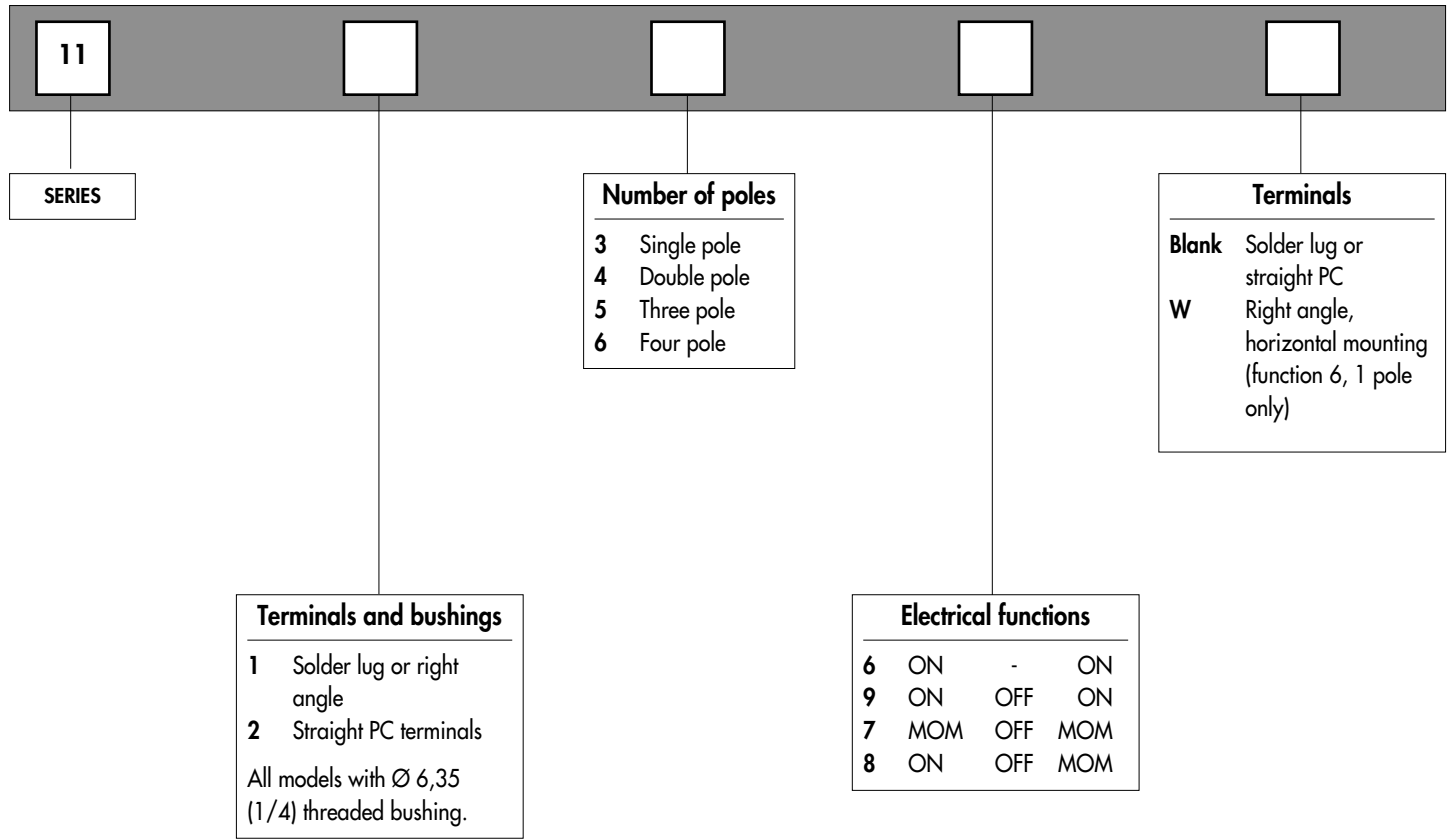
11000 SERIES

PROFESSIONAL TOGGLE SWITCHES - THREADED BUSHING Ø 6,35 (1/4)

Overview

MODEL
STRUCTURE

B



ABOUT THIS SERIES

On the following pages, you will find successively :

- model structure of switches
- options in the same order as in above chart

Dimensions : first dimensions are in mm while inches are shown as bracketted numbers.

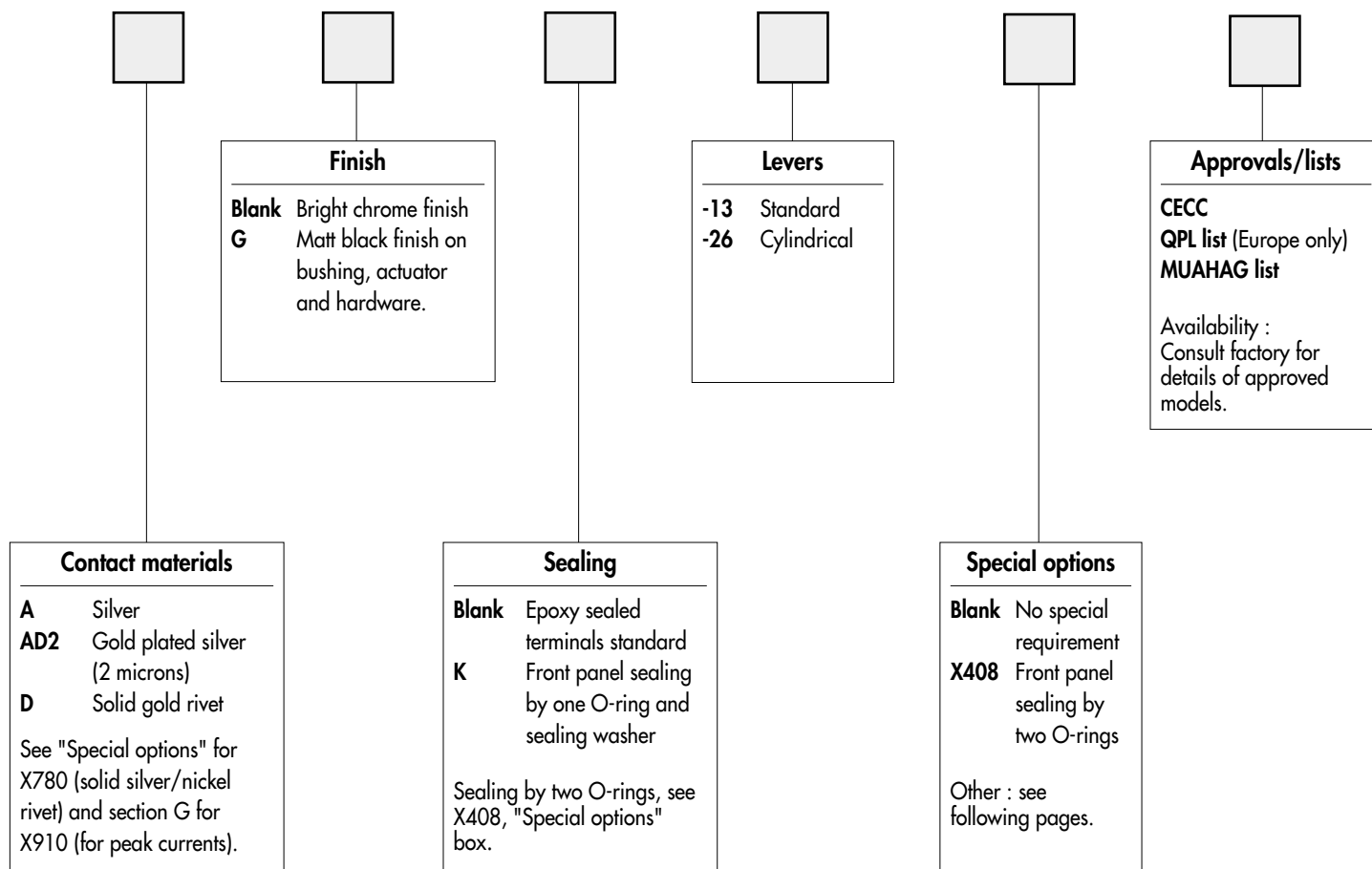
11000 SERIES

PROFESSIONAL TOGGLE SWITCHES - THREADED BUSHING Ø 6,35 (1/4)

Overview

OPTIONS
● ● ●

B



NOTICE : please note that not all combinations of above numbers are available. Refer to the following pages for further information.



Sealing boots are available to protect the switches against dust and water. They are presented in section N.



Mounting accessories : standard hardware supplied with all models : 2 hex nuts 8 (.314) across flats, 1 locking ring and 1 lockwasher.
 Standard and special hardware available are presented in section N.



Packaging unit : 25 pieces or 50 pieces depending on models.

11000 AND 12000 SERIES

PROFESSIONAL TOGGLE SWITCHES

Specifications

B

ELECTRICAL SPECIFICATIONS

- Max. current/voltage rating with resistive load :
 - silver contacts (A-AD2-X780) : 2A 250VAC - 4A 125VAC - 4A 30VDC
 - gold contacts (D) : 200mA 250VAC - 400mA 125VAC
- Minimum load : AD2-X780-D contacts : 10mA 50mV, 10µA 5V min.
- Initial contact resistance : 10 mΩ max.
- Insulation resistance : 1.000 MΩ min. at 500VDC
- Dielectric strength :
 - 1.000 Vrms 50 Hz min. between terminals
 - 2.000 Vrms 50 Hz min. between poles and between terminals and frame
- Contact bounce : 2 ms max.
- Electrical life at full load :

Contacts	Max. current/voltage rating	Number of cycles	
		2 positions	3 positions
A	2A 250VAC - 4A 125VAC - 4A 30VDC	50.000	50.000
AD2 X780	2A 250VAC - 4A 125 VAC - 4A 30VDC Under 100mA 30VDC without damaging the gold plating	20.000	20.000
D	200mA 250VAC - 400mA 125VAC	80.000	50.000
	Low level or mechanical life	150.000	100.000

For peak current, refer to section G.

MATERIALS

- Case : diallylphthalate (DAP)
- Actuator : brass, chrome plated
- Bushing : brass, nickel plated
- Housing : brass, nickel plated
- Contacts
 - A** : silver
 - AD2** : gold plated silver (2 microns gold)
 - X780** : solid rivet - gold plated silver/nickel alloy
 - D** : solid gold rivet
 - X910** : silver/nickel alloy (for peak current, see section G)
- Terminal seal : epoxy

Note : AD2 and X780 contacts can be used for high level applications. In this case, the gold layer is considered only as a protection against oxidation during storage.

Tin plated PC terminals available, see "Special options".

GENERAL SPECIFICATIONS

- Torque :
 - 11000 = 1,25 Nm (.92 Ft.lb) max. applied between the 2 nuts
 - 12000 = 1,50 Nm (1.10 Ft.lb) max. applied between the 2 nuts
- Standard panel thickness :
 - 11000 = 2,5 mm (.098) max.
 - 12000 = 4,5 mm (.177) max.
- Operating temperature : -40°C to +85°C

RELIABILITY - RUN-IN TEST

Upon request, each individual switch can be submitted to a low level run-in test of 50 or 250 cycles to ensure suitability for special applications requiring a very high level of reliability (military, space, etc.).

AGENCY APPROVALS/PREFERENTIAL LISTS



CECC 96201-005
CECC 96201-008

QPL (Europe only)

MUAHAG

Designed to **MIL** specifications (12000 only)

Availability : consult factory for details of approved models.

Marking : to order switches marked CECC, complete appropriate box of ordering format.

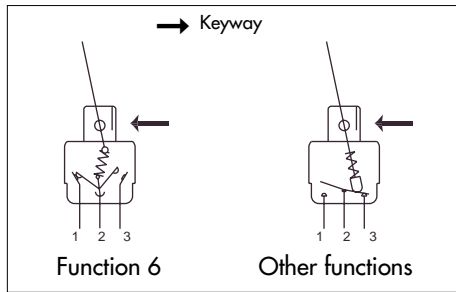
Preferential lists do not appear on the switches.

11000 SERIES

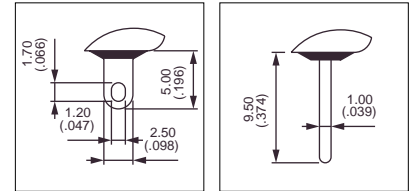
PROFESSIONAL TOGGLE SWITCHES - THREADED BUSHING Ø 6,35 (1/4)

MODEL
STRUCTURE

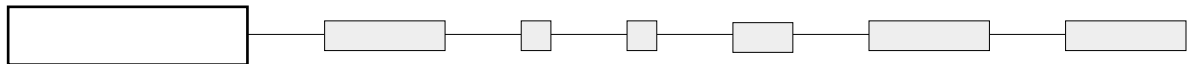
B



- Solder lug, straight PC or right angle terminals
- Epoxy sealed terminals standard



MODEL
STRUCTURE



Shown with standard lever (-13)

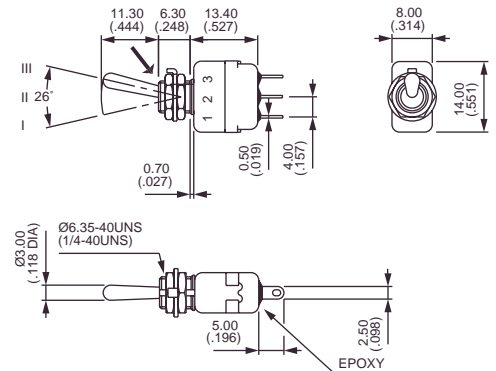
Solder lug terminals - single pole



11136
11139
11137
11138

	I	II	III
ON	-	ON	
ON	OFF	ON	
MOM	OFF	MOM	
ON	OFF	MOM	

→ Keyway



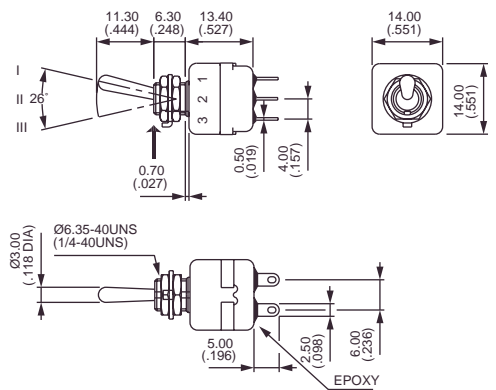
Solder lug terminals - double pole



11146
11149
11147
11148

	I	II	III
ON	-	ON	
ON	OFF	ON	
MOM	OFF	MOM	
ON	OFF	MOM	

→ Keyway



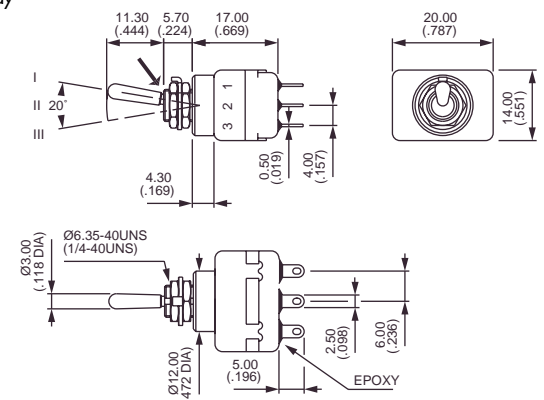
Solder lug terminals - three pole



11156
11159
11157
11158

	I	II	III
ON	-	ON	
ON	OFF	ON	
MOM	OFF	MOM	
ON	OFF	MOM	

→ Keyway



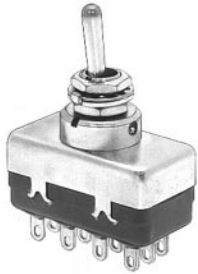
11000 SERIES

PROFESSIONAL TOGGLE SWITCHES - THREADED BUSHING Ø 6,35 (1/4)

MODEL
STRUCTURE

B

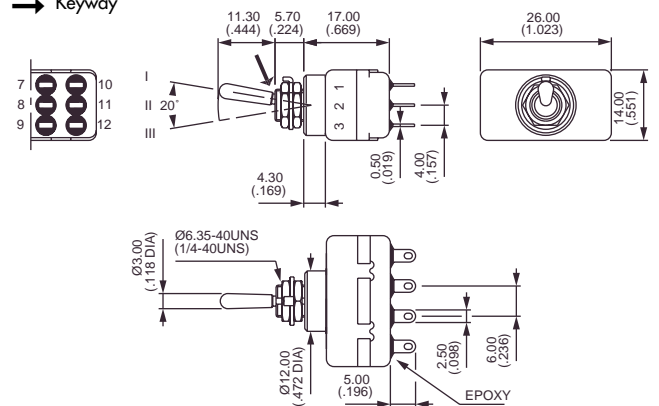
Solder lug terminals - four pole



11166
11169
11167
11168

II	II	III
ON	-	ON
ON	OFF	ON
MOM	OFF	MOM
ON	OFF	MOM

→ Keyway



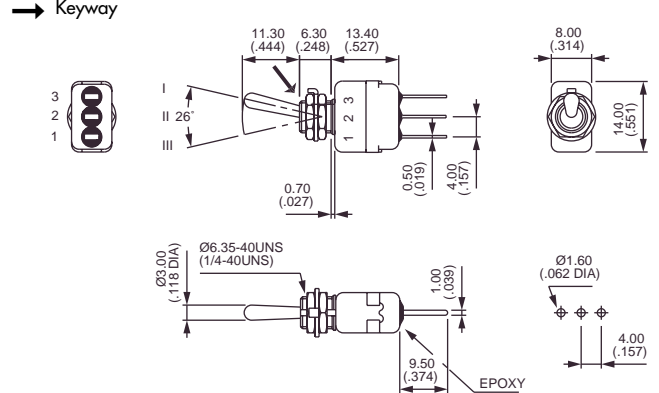
Straight PC terminals - single pole ▲



11236

II	II	III
ON	-	ON

→ Keyway



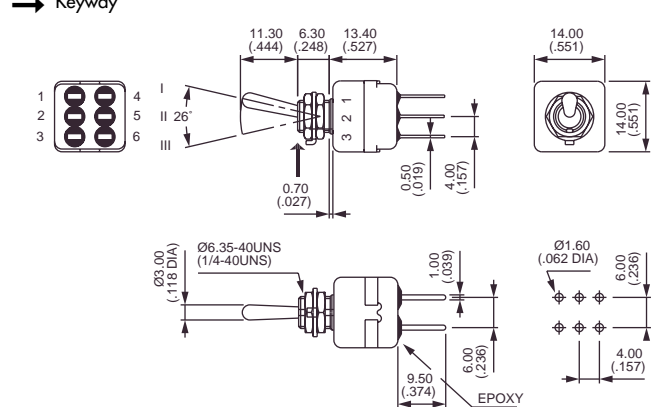
Straight PC terminals - double pole ▲



11246

II	II	III
ON	-	ON

→ Keyway



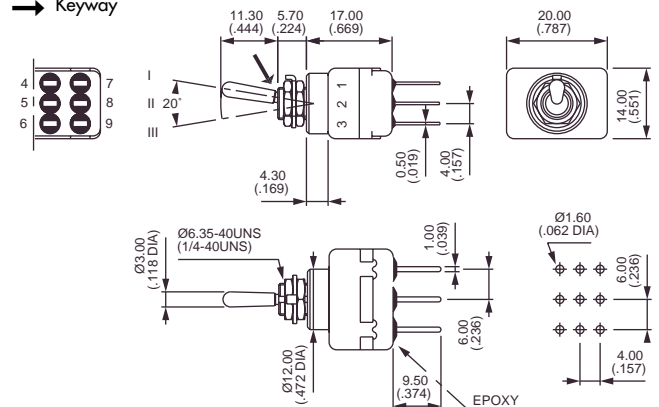
Straight PC terminals - three pole ▲



11256

II	II	III
ON	-	ON

→ Keyway



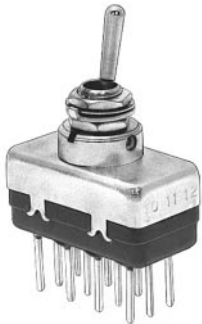
11000 SERIES

PROFESSIONAL TOGGLE SWITCHES - THREADED BUSHING Ø 6,35 (1/4)

MODEL
STRUCTURE

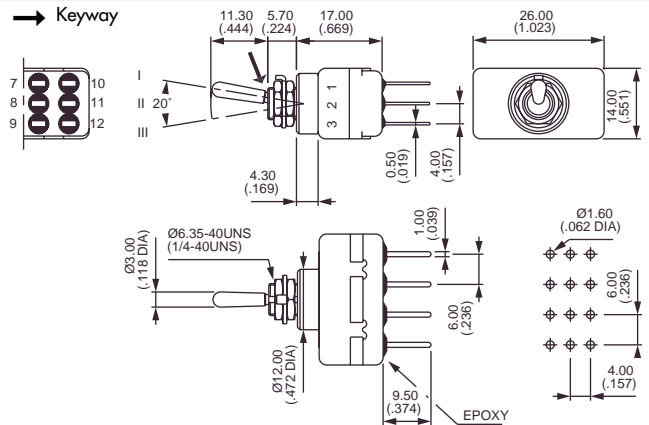
B

Straight PC terminals - four pole ▲



11266

II II III
ON - ON

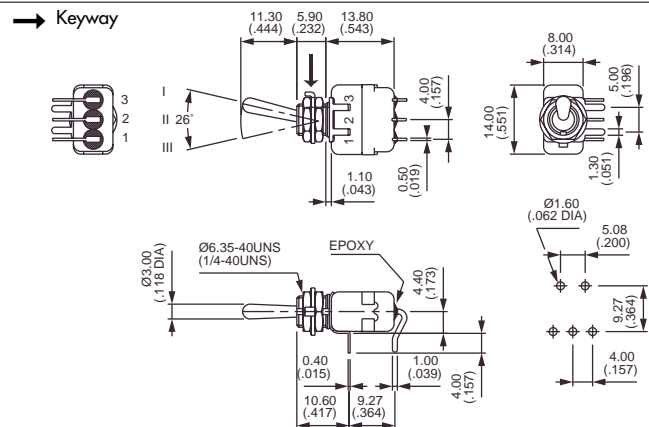


Right angle terminals - horizontal - single pole



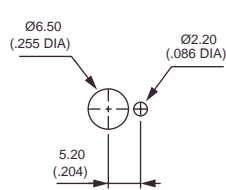
11136W

I II III
ON - ON

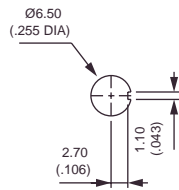


▲ Models with straight PC terminals are also available with 3,5 mm (.138) short terminals, functions 6, 9, 7 and 8. On request.

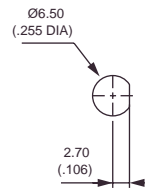
PANEL CUT-OUT



Standard



With K
sealing option



With X408
sealing option

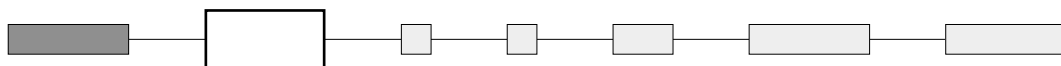
11000 SERIES

PROFESSIONAL TOGGLE SWITCHES - THREADED BUSHING Ø 6,35 (1/4)

OPTIONS
● ● ●

B

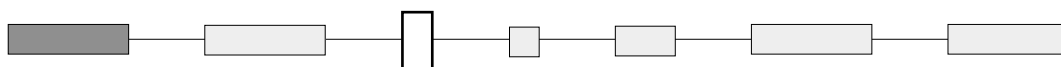
CONTACT MATERIALS



- A** Silver
- AD2** Gold plated silver (2 micron gold)
- D** Solid gold rivet

See "Special options" for contacts X780 (solid silver/nickel rivet) and section G for contacts X910 (for peak currents).

FINISH



- Blank** Bright chrome finish
- G** Matt black finish on bushing, lever and hardware.

Other finish, consult factory.

SEALING

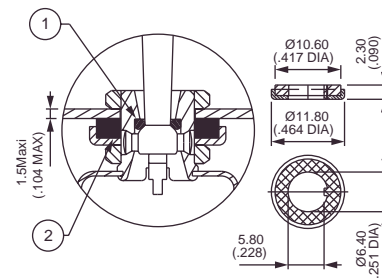


Epoxy sealed terminals are standard.

- Blank** No sealing except standard
- K** Front panel sealing by O-ring and sealing washer. Protects the switch against water and dust. Panel seal withstands 1 bar pressure and remains sealed even when switch is operated.



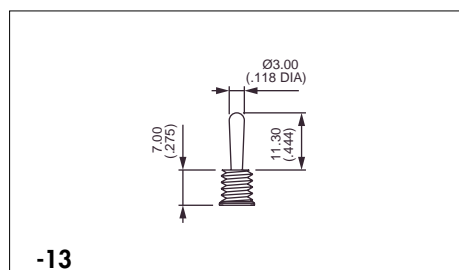
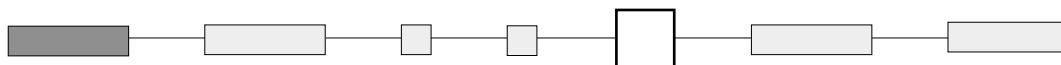
Not available on 11000W model.



Sealing by two O-rings, see X408 under "Special options".
Sealing boots : see section N.

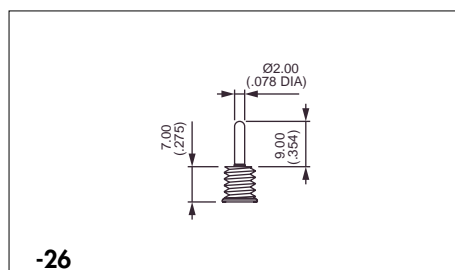
- ① O-ring
- ② Sealing washer

LEVERS



-13

Standard



-26

Cylindrical

11000 SERIES

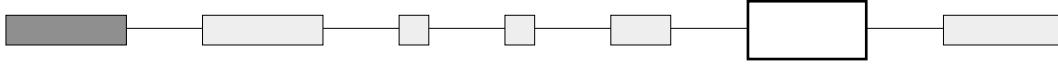
PROFESSIONAL TOGGLE SWITCHES - THREADED BUSHING Ø 6,35 (1/4)

OPTIONS



B

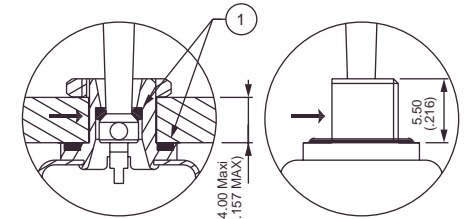
SPECIAL OPTIONS



- X408** Front panel sealing by two O-rings. Flatted bushing for precise orientation.
Protects the switch against water and dust.
Panel seal withstands 1 bar pressure and remains sealed even when switch is operated.



Not available on 11000W model.



X408

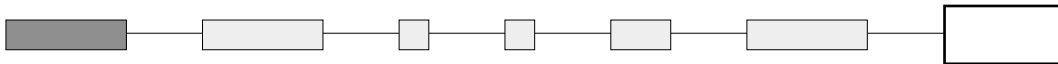
→ Flat

① O-rings

- F** Tin dipped terminals (PC terminals only)

- X780** Solid rivet, gold plated silver/nickel alloy

AGENCY APPROVALS



- CECC** CECC 96201-005 (high level - contacts X780)
CECC 96201-008 (low level - contacts AD2 or D)

Availability : consult factory for details of approved models.

Marking : to order switches marked CECC , complete above box with "CECC".
Blank : no agency approval required.

Preferential lists : see specifications.

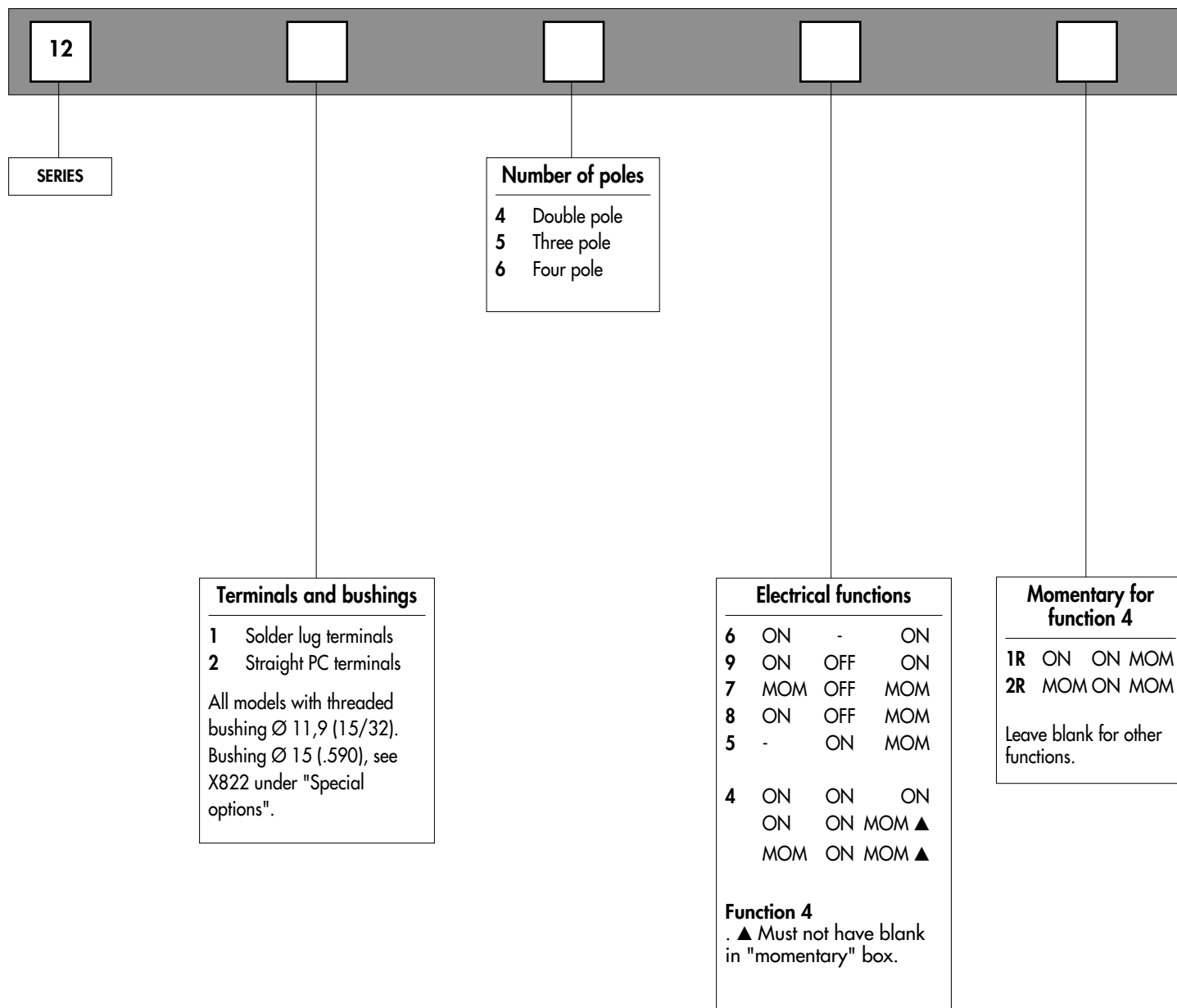
12000 SERIES

PROFESSIONAL TOGGLE SWITCHES - THREADED BUSHING Ø 11.9 (15/32)

Overview

MODEL
STRUCTURE

B



ABOUT THIS SERIES

On the following pages, you will find successively :
- model structure of switches
- options in the same order as in above chart

Specifications, refer to beginning of 11000 series

Dimensions : first dimensions are in mm while inches are shown as bracketted numbers.

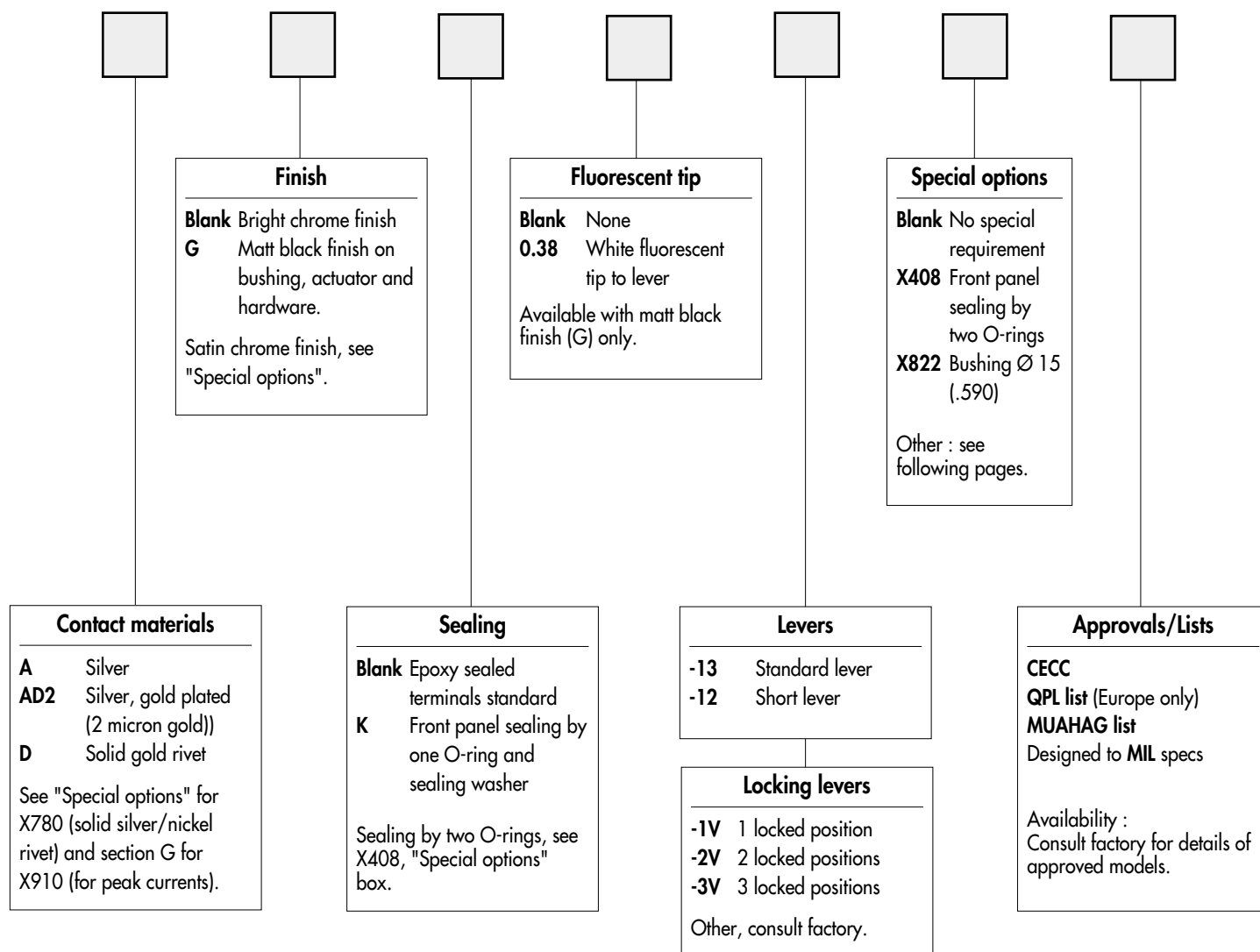
12000 SERIES

PROFESSIONAL TOGGLE SWITCHES - THREADED BUSHING Ø 11.9 (15/32)

Overview

OPTIONS
● ● ●

B



Sealing boots are available to protect the switches against dust and water. They are presented in section N.



Mounting accessories : standard hardware supplied with all models : 2 hex nuts 14 mm (.551) across flats and 1 locking ring. Standard and special hardware available are presented in section N.

Security caps are available to prevent inadvertent lever operation. They are presented in section M.



Packaging unit : 2 pole models : 25 pieces
 3 and 4 pole models : 20 pieces

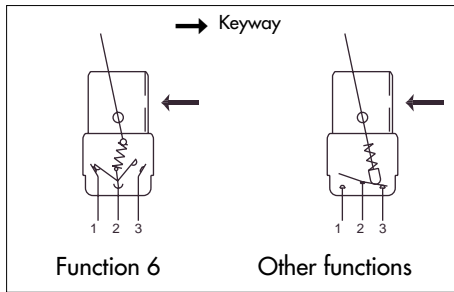
12000 SERIES

PROFESSIONAL TOGGLE SWITCHES - THREADED BUSHING Ø 11.9 (15/32)

Solder lug terminals : 12100

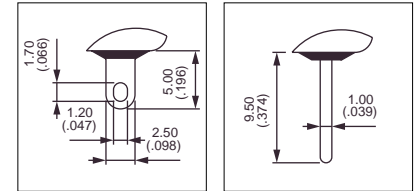
MODEL
STRUCTURE

B

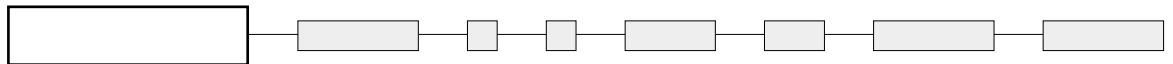


Due to high reliability, this type was chosen for the Spacelab and Columbus programmes.

- Epoxy sealed terminals standard



MODEL
STRUCTURE



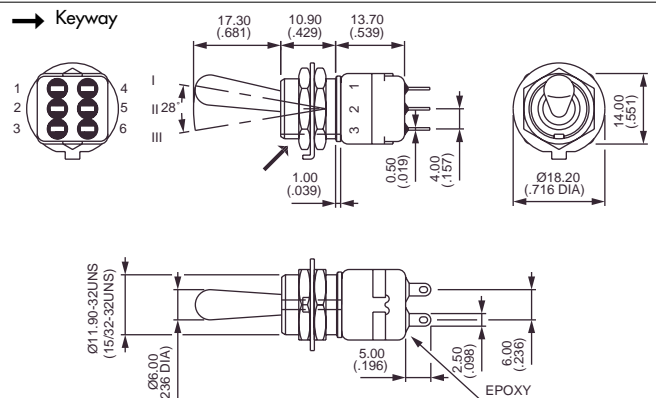
Shown with standard lever (-13)

Solder lug terminals - double pole



12146
12149
12147
12148
12144*
12144 1R*
12144 2R*
12145

I	II	III
ON	-	ON
ON	OFF	ON
MOM	OFF	MOM
ON	OFF	MOM
ON	ON	ON
ON	ON	MOM
MOM	ON	MOM
-	ON	MOM



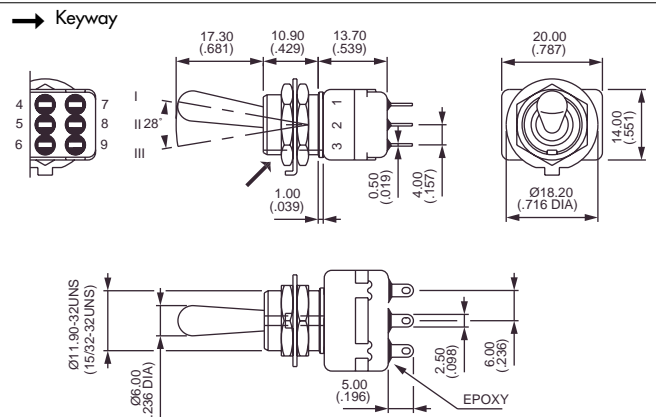
* Function 4 : SP in DP case - connections, see end of section B.

Solder lug terminals - three pole

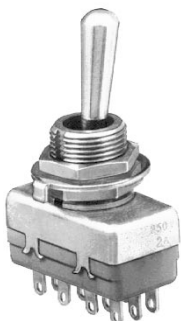


12156
12159
12157
12158

I	II	III
ON	-	ON
ON	OFF	ON
MOM	OFF	MOM
ON	OFF	MOM

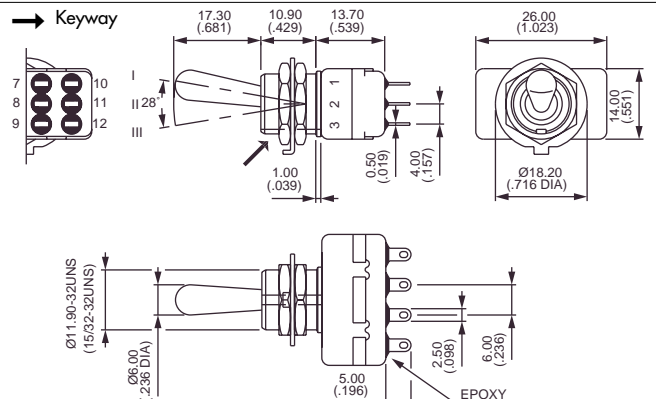


Solder lug terminals - four pole



12166
12169
12167
12168
12164*
12164 1R*
12164 2R*

I	II	III
ON	-	ON
ON	OFF	ON
MOM	OFF	MOM
ON	OFF	MOM
ON	ON	ON
ON	ON	MOM
MOM	ON	MOM



* Function 4 : DP in 4P case - connections, see end of section B.

12000 SERIES

PROFESSIONAL TOGGLE SWITCHES - THREADED BUSHING Ø 11.9 (15/32)

Straight PC terminals : 12200

MODEL
STRUCTURE

B

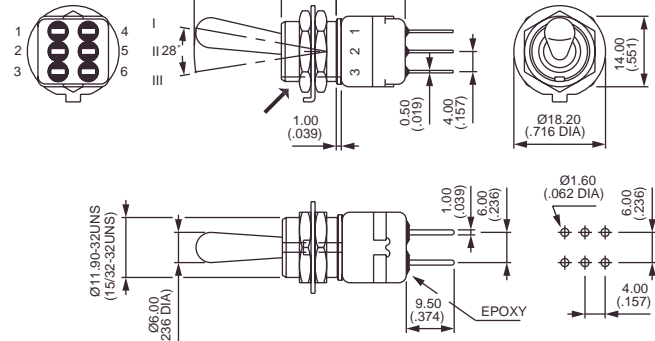
Straight PC terminals - double pole ▲



12246

I II III
ON - ON

→ Keyway



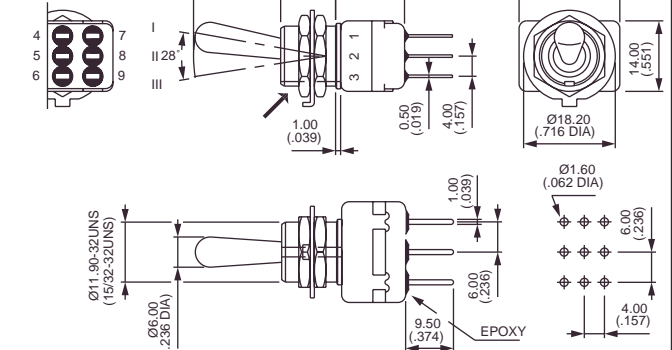
Straight PC terminals - three pole ▲



12256

I II III
ON - ON

→ Keyway



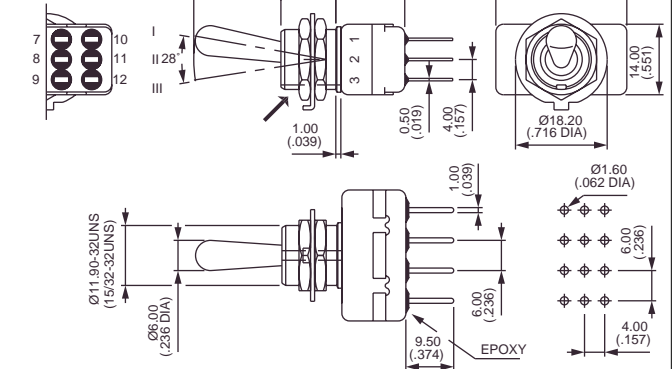
Straight PC terminals - four pole ▲



12266

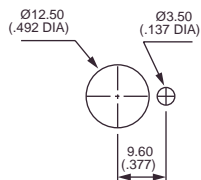
I II III
ON - ON

→ Keyway

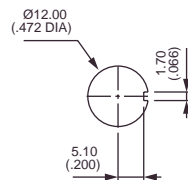


▲ Models with straight PC terminals are also available with 3,5 mm (.138) short terminals, functions 6, 9, 7 and 8. On request.

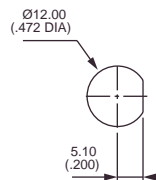
PANEL CUT-OUT



Standard



With K
sealing option



With X408
sealing option

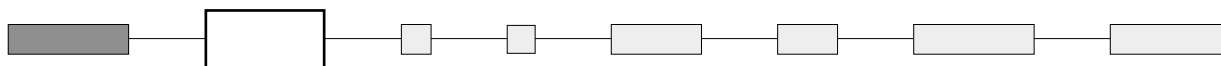
12000 SERIES

PROFESSIONAL TOGGLE SWITCHES - THREADED BUSHING Ø 11.9 (15/32)

OPTIONS
● ● ●

B

CONTACT MATERIALS



- A** Silver
- AD2** Silver, gold plated (2 micron gold)
- D** Solid gold rivet

See "Special options" for contacts X780 (solid silver/nickel rivet) and section G for contacts X910 (for peak currents).

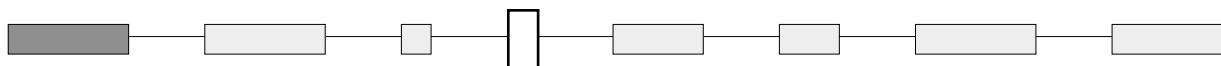
FINISH



- Blank** Bright chrome finish
- G** Matt black finish on bushing, lever and hardware.

For satin chrome finish, see "Special options".

SEALING

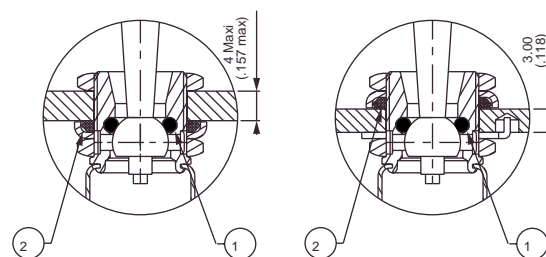


Epoxy sealed terminals are standard.

- Blank** No sealing except standard.

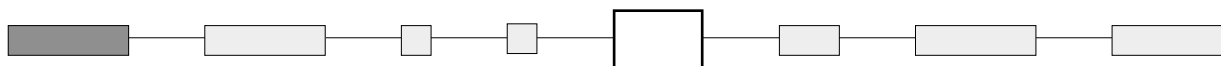
- K** Front panel sealing by one O-ring and sealing washer. Protects the switch against water and dust. Panel seal withstands 1 bar pressure and remains sealed even when switch is operated.

Sealing by two O-rings, see X408 under "Special options".
Sealing boots : see section N.



① O-ring ② Sealing washer

FLUORESCENT TIP



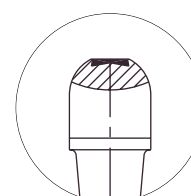
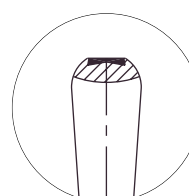
- Blank** None
- 0.38** White fluorescent tip. Becomes luminous when submitted to ultra-violet rays.



Available with matt black finish (option G) only.

Standard lever

Locking lever



12000 SERIES

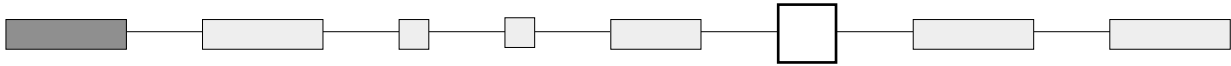
PROFESSIONAL TOGGLE SWITCHES - THREADED BUSHING Ø 11.9 (15/32)

OPTIONS



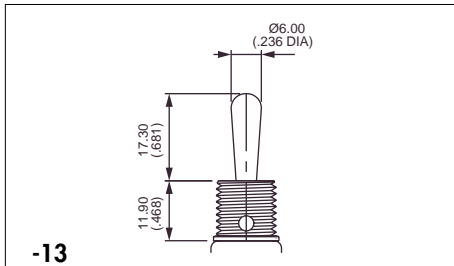
B

ACTUATORS



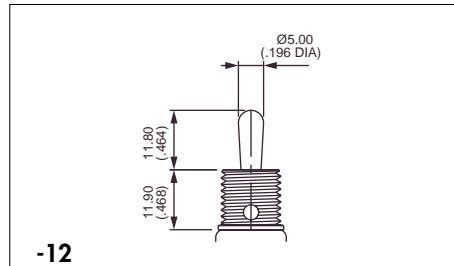
Dash compulsory before lever code.

Levers



-13

Standard

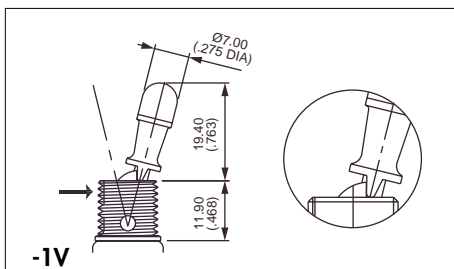


-12

Short lever

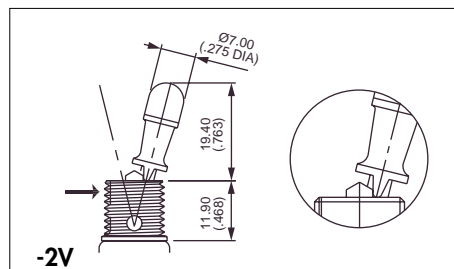
Security caps : see section M.

Locking levers



-1V

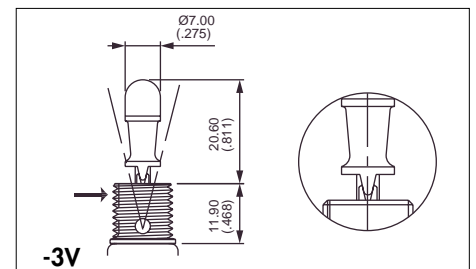
1 locked position (function 6)



-2V

2 locked positions (function 6)

→ Keyway

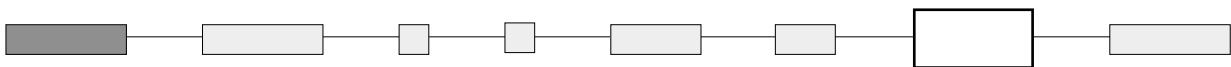


-3V

3 locked positions (functions 9 and 4)

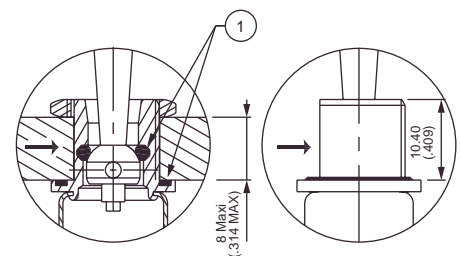
Consult factory for other locking lever options.

SPECIAL OPTIONS



Blank No special requirement.

X408 Front panel sealing by two O-rings. Flatted bushing for precise orientation.
Protects the switch against water and dust.
Panel seal withstands 1 bar pressure and remains sealed even when switch is operated.



→ Flat ① O-rings

X545 Lever, bushing, housing, nuts and washers **with satin chrome finish.**

F Tin dipped terminals (for PC terminals only).

12000 SERIES

PROFESSIONAL TOGGLE SWITCHES - THREADED BUSHING Ø 11.9 (15/32)

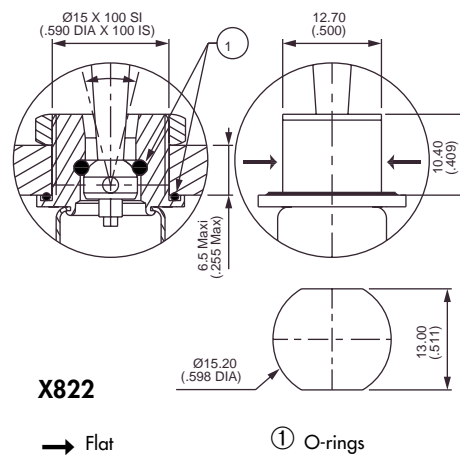
OPTIONS
● ● ●

B

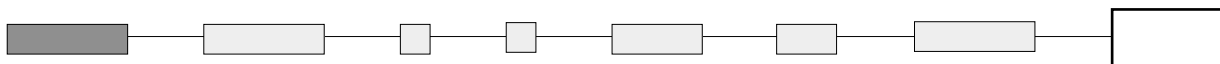
SPECIAL OPTIONS (continued)

X822 Threaded bushing Ø 15 (.590), with double flat
Not available with function 5 or locking levers.
Includes front panel sealing and X780 contact material.

X780 Solid rivet - gold plated silver/nickel alloy contacts
Not available with function 5.



AGENCY APPROVAL



CECC CECC 96201-005 (high level - contacts X780)
CECC 96201-008 (low level - contacts AD2 or D)

Availability : consult factory for details of approved models.

Marking : to order switches marked CECC, complete above box with "CECC".
Blank : no agency approval required.

Preferential lists : see specifications.