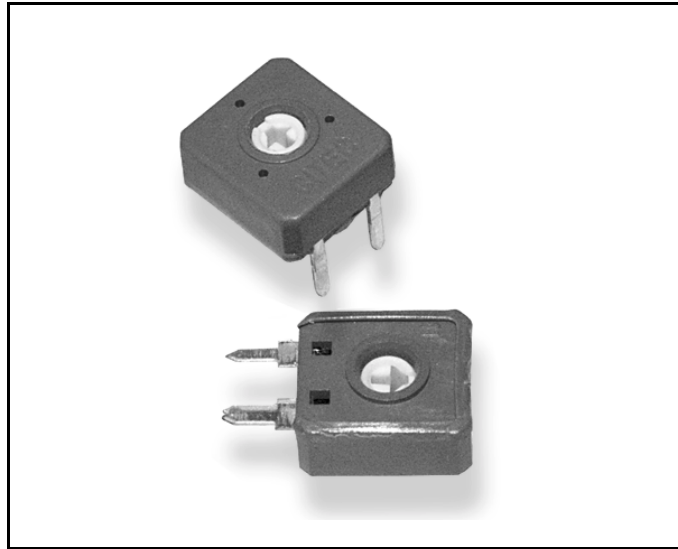


TYPE CB10 SERIES

1st August 2003
ISSUE 3

Carbon Economy Trimmers

**TYPE CB10 SERIES**

Low price, versatility and stable environmental characteristics are important benefits of this product. Featuring an innovative carbon resistive element printed on film in a fully enclosed package, this potentiometer style is normally chosen for a wide range of applications in industrial, professional and consumer equipment.

KEY FEATURES

- Low Cost
- Robust Enclosed Construction
- Spindle Adjust Versions
- Flame Retardant
- Arrow Position Indicator
- Top, Bottom and Side Adjust Styles
- Stable in High Humidity
- Edgewheel Operation Style

STOCKISTS:

This product is not stocked in Distribution.

TYPE CB10 SERIES

1st August 2003
ISSUE 3

ELECTRICAL

Resistance Range:	100R to 10M Linear , 1K to 1M Non-Linear
Resistance Values:	1, 2.2 & 4.7 in each decade
Resistance Tolerance:	± 20% (± 30% above 1 Megohms)
End Resistance:	< 3%
Power Rating @ 40°C:	0.15 Watts (derating to zero at 70°C)
Maximum Voltage:	Lin. 200V DC / Log. 150V DC
Rotational Noise (CRV):	<5% of Rn nominal
Temperature Coefficient:	±500 ppm/°C (≤ 100K ohms)
Slider Current:	50mA
Resolution:	Essentially Infinite
Electrical Adjustment:	240° Nominal 1 Turn

MECHANICAL

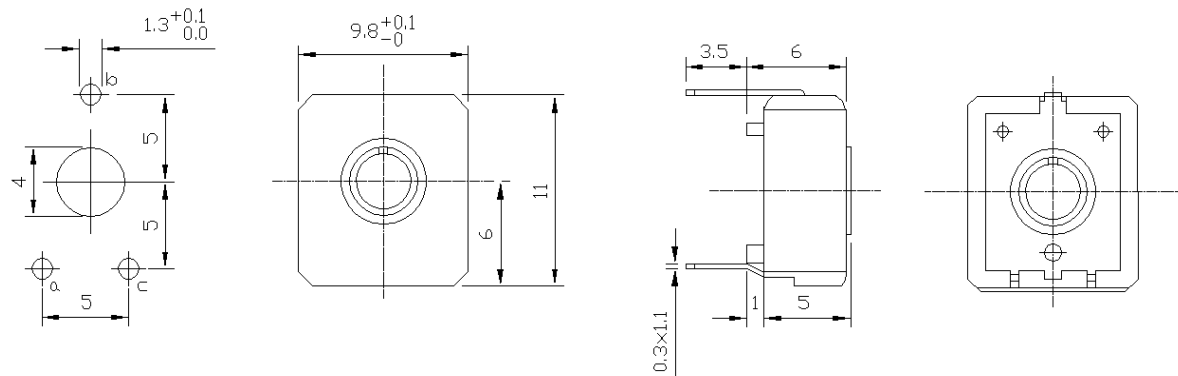
End Torque:	50 mNm maximum
Starting Torque:	4 to 20 mNm
Mechanical Adjustment:	295° nominal
Weight:	0.8 grams

ENVIRONMENTAL

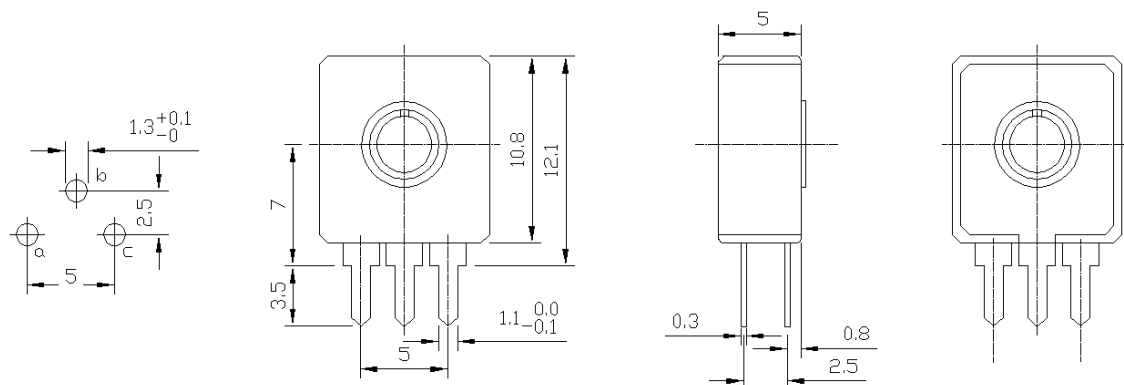
Temperature Range:	-25°C to +70°C
Temperature Storage:	1000 hours at 100°C
Rotational Life:	500 cycles, minimum (10000 cycles-extended life versions)
Load Life at 40°C:	ΔR <10% after 1000 hours
Sealing:	Dust and Splash Proof
Climate Category:	25/70/21

DIMENSIONS

CB10V



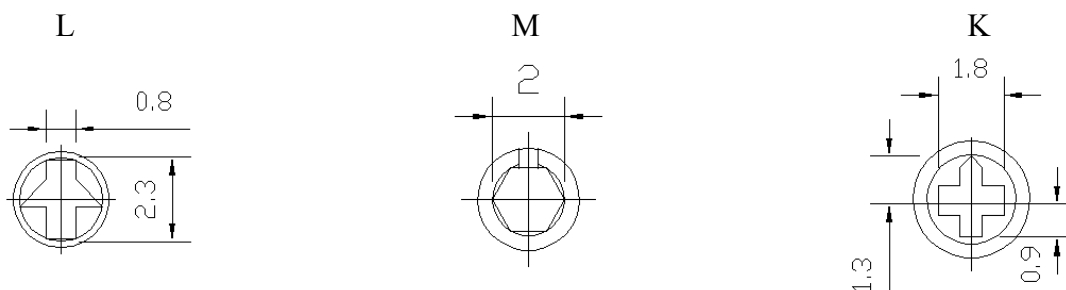
CB10H



TYPE CB10 SERIES

1st August 2003
ISSUE 3

ADJUSTMENT STYLES



HOW TO ORDER

COMMON PART	ADJUSTMENT STYLE	ORIENTATION	RESISTANCE VALUE	TOLERANCE	FEATURES
CB10 – 10mm Cermet Trimmer	L – Arrow Head M – Hex Centre K – Cross Slot	H – Vertical to PCB V – Horizontal to PCB	102 The first two digits are significant figures of resistance value. The third digit denotes the number of zeros following Example 100R – 101 1K0 – 102 10K – 103 100K – 104	M K – 10% (Special) M – 20% N – 30% (>1Meg)	- - - Standard E – Extended Life

This publication is issued to provide outline information only and (unless specifically agreed to the contrary by the Company in writing) is not to form part of any order or be regarded as a representation relating to the products or service concerned. We reserve the right to alter without notice the specification, design, price or conditions of supply of any product or service. Whilst Tyco Electronics Components products are of the very highest quality and reliability, all electronic components can occasionally be subject to failure. Where failure of a Tyco Electronics Components product could result in life threatening consequences, then the circuit and application must be discussed with the Company. Such areas might include ECG, respiratory and other medical and nuclear applications and any non fail-safe applications circuit.