

Specifications

Insulation Resistance: 1,000MΩ min.
 Withstanding Voltage: 500V AC rms for 1 minute
 Contact Resistance: 40mΩ max.
 Current Rating: 0.5A per contact
 Soldering Temp.: 220°C / 40 sec, 235°C peak

Materials and Finish

Insulator: PBT, glass filled (UL94V-0)
 Contact: Phosphor Bronze
 Plating:-
 Header: Card side - Au 0.3μm over Ni 2.0μm
 Rear side - Au flash over Ni 2.0μm
 Rear Socket: Mating side - Au 0.2μm over Ni 1.0μm
 Solder side - Au flash over Ni 1.0μm
 Plate: Stainless Steel
 Side Contact: Phosphor Bronze
 Plating: Au over Ni



Features

- ❑ SMT connector makes assembly and rework easier
- ❑ Small, light and low profile connector meets all kinds of PC card system requirements
- ❑ Various product combinations single or double deck, right or left eject lever, polarization styles, various stand-off heights, fully supports the customer's design needs
- ❑ Convenience of PC card removal with push type eject lever



Part Number (Details)

CNS - STP - A R - 8 3 - A

Series

S = Single Deck

PCB Mounting Style:
T = Top B = Bottom

Voltage Style:
P = 3.3V / 5V Card

A = Plastic Lever
 B = Metal Lever
 C = Foldable Lever
 D = 2 Step Lever
 E = Without Ejector

Eject Lever:
R = Right L = Left

Height of Stand-off:
1 = 0mm 4 = 2.2mm 8 = 5.0mm

Nut Insert: 0 = None (on request)
 1 = Header (on request)
 2 = Guide (on request)
 3 = Header / Guide (standard)

Shield Plate: A = None
 B = Top
 C = Bottom
 D = Top / Bottom

Part Number (Details) for Rear Socket

PCMCIA - 1260 - *

Packing Number

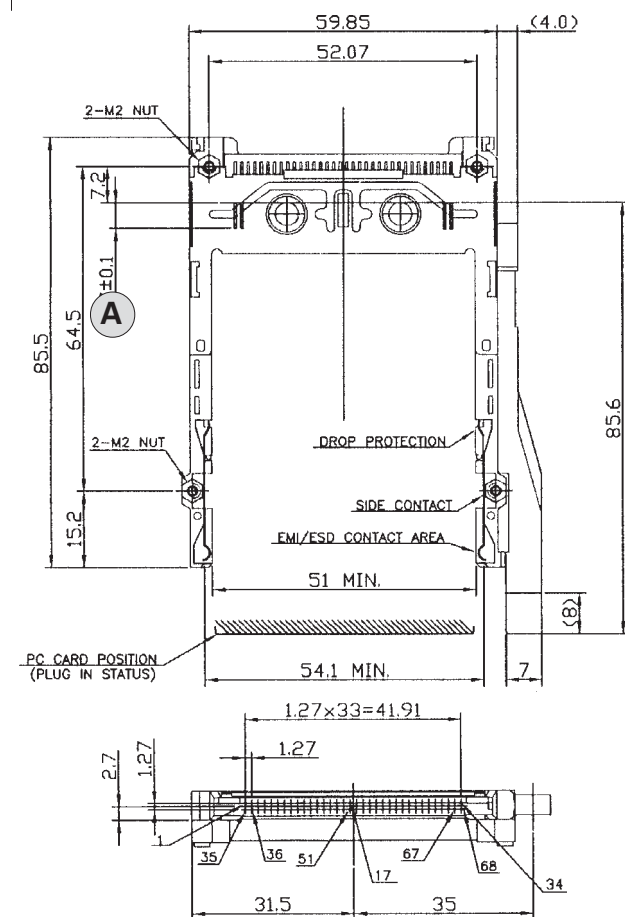
Available Types
 0 = Without Kapton Film (Tray)
 1 = With Kapton Film (Tray)
 9 = With Kapton Film (Tape & Reel, 1,500 pcs. per reel)

The table below shows the Single Deck SMT products that are held on stock.

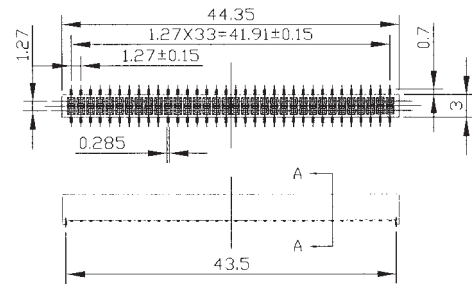
All other versions are available but 0.0 and 2.2mm Stand-off products are subject to a minimum order quantity of 1,120 pcs.

Part Number	Mounting Position	Voltage	Ejector Type	Ejector Position	Stand-off Height (mm)	Nut Insert	Shield Plate
CNS-SBP-E-83A	Bottom	3.3 / 5V	None	-	5.0	Header+Guide	None
CNS-STP-E-13A	Top	3.3 / 5V	None	-	None	Header+Guide	None
CNS-STP-AL-83A	Top	3.3 / 5V	Plastic	Left	5.0	Header+Guide	None
CNS-SBP-AR-13A	Bottom	3.3 / 5V	Plastic	Right	None	Header+Guide	None
CNS-SBP-AR-83A	Bottom	3.3 / 5V	Plastic	Right	5.0	Header+Guide	None
PCMCIA-1260-*	-	-	-	-	-	-	None

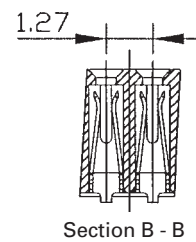
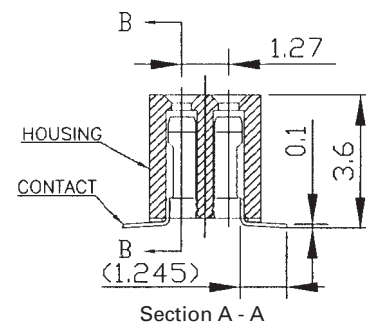
Example: Single Deck SMT Fixing with 5.0mm Stand-off



Rear Socket



Rear Socket Section Details



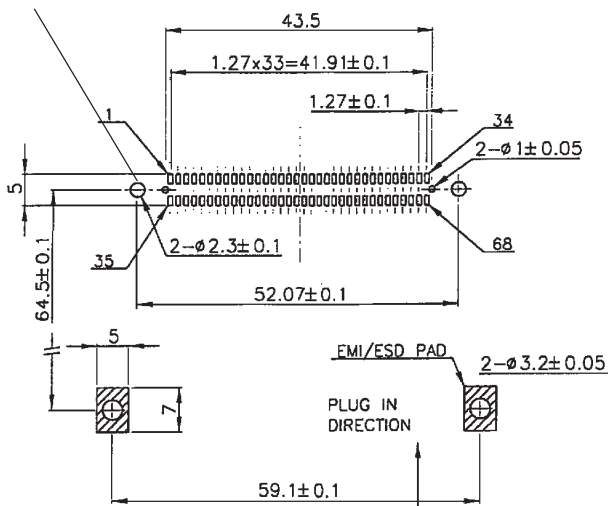
Contact Dimensions at	A	Length
Contacts A1, A17, A34, A35, A51 and A68		5.00 ±0.1
Contacts A36 and A67		3.50 ±0.1
All other contacts		4.25 ±0.1

Example PCB Layout

Top View

With Stand-off

Please Note: this hole for stand-off 2.2mm and 5.0mm lies on the center line with the SMD pad



Without Stand-off

