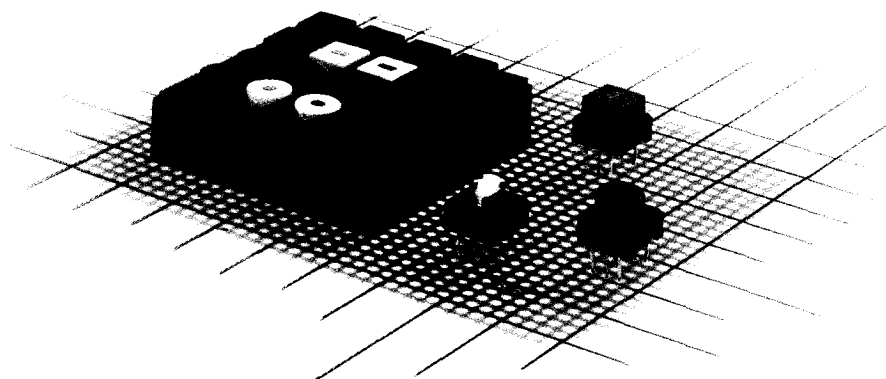


KSD Tact Switch with LED Illumination



KSD is a tact switch in the KS family with LED indication.

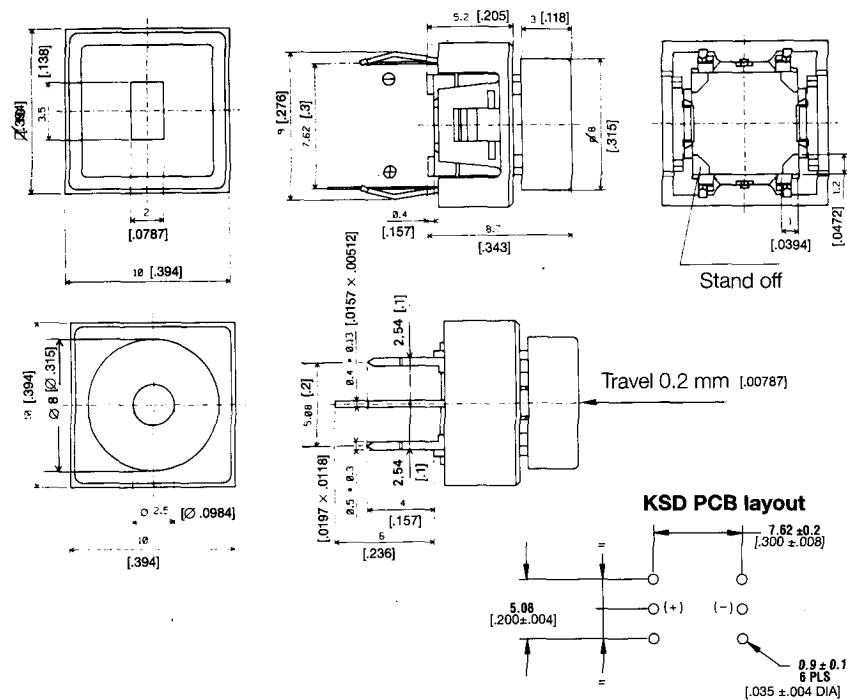
This tact switch can be either:

- With round light guide Ø 2.5 mm [.0984 inch]
- Or with rectangular light guide 3.5 × 2 mm [.138 × .0787 inch]

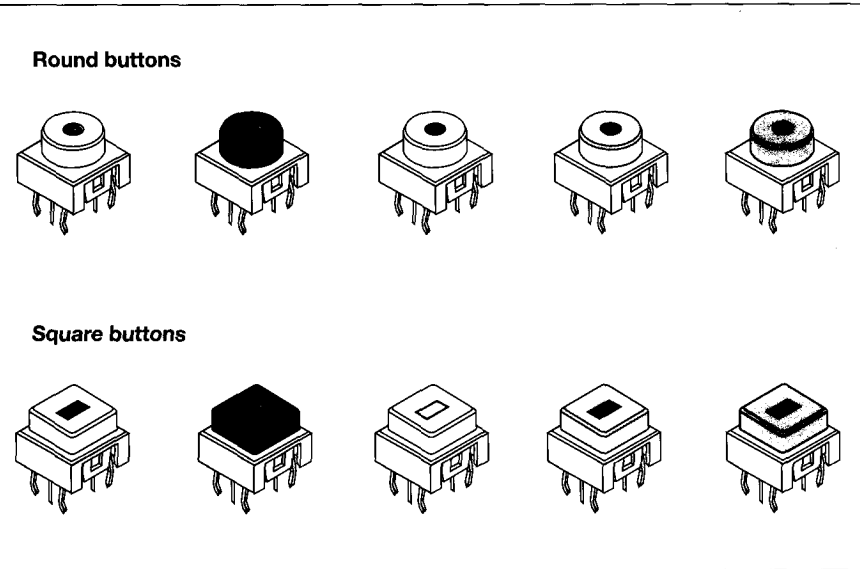
Or equipped with buttons:

- Round or square button (ordering code see next page)
- KSD buttons are delivered separately
- LED specifications:
 - Direct current: 20 mA
 - Reverse voltage: 4 V
 - Luminosity:
 - red: 8.8 mcd
 - green: 4.3 mcd
 - yellow: 4.5 mcd
- Minimum pitch on PCB: 10.16 × 10.16 mm [.400 × .400 inch] and PC board terminals are 5.08 × 7.62 mm [.200 × .300 inch]
- Available with cambered terminals to ensure self-retention on the PCB during wave soldering

Dimensional Drawings · Dimensions in mm [inch]



Available combinations of buttons and LED colors



Ordering code		1	2	3	4
1	Designation: KSD	Example: KSD 0 50 1			
2	Light pipe: 0 = round, 1 = rectangular	→	↑	↑	↑
3	LED color: 30 = yellow, 40 = red, 50 = green,		→		
4	Operating force/operating life: 1 = 1.6N [160 grams]/100k operations, 4 = 3N [300 grams]/100 k operations		→		

Ordering code for KSD button		1	2	3	4
1	Button: BTN	Example: BTN KSD 0 40			
2	Switch: KSD	→	↑	↑	↑
3	Form: 0 = round, 1 = square		→		
4	Button color: 20 = light grey, 30 = yellow, 40 = red, 50 = green, 90 = black		→		