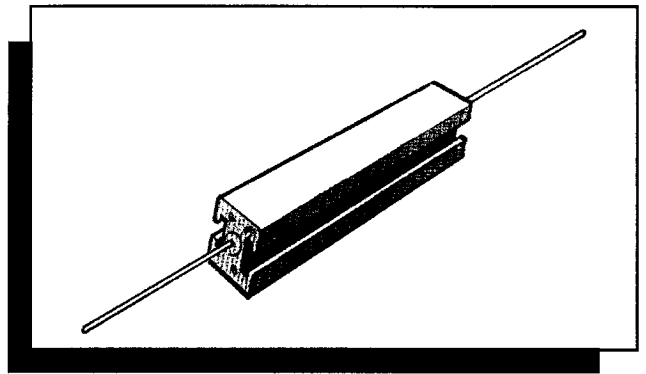


MEC CGS

**HIGH VOLTAGE RESISTORS
HIGH VALUE RESISTORS
HIGH POWER RESISTORS
ALUMINIUM CLAD RESISTORS
CURRENT SENSE RESISTORS**

High Power Resistor

TYPE SBC (SQUARE CERAMIC) SERIES



This range of Power Wirewound Resistors are wound on continuous glass fibre elements.

The element is housed in a ceramic case and sealed with an inorganic silica filler. Their construction gives a resistor with high insulation resistance and low surface temperature, capable of withstanding high overload currents.

These resistors are ideally suited to a variety of applications within industrial and commercial environments, where performance and reliability are of prime importance.

Applications include fan force ovens, cooker hoods, power supplies and triac based speed controls.

This range was previously sold as the Holsworthy SC Types. Custom Design Variants in value and style are welcomed.

MEC CGS KEY FEATURES

- UP TO 17 WATTS
- FUSIBLE STYLES
- VERTICAL OR AXIAL
- NON FLAMMABLE
- SPECIAL SOLVENT RESISTANCE
- ATTRACTIVELY PRICED
- CUSTOMER SPECIALS INVITED

SPECIFICATION

TYPE SBC SERIES

CONSTRUCTION

A range of flame-proof wirewound resistors with excellent electrical and mechanical characteristics. The resistance wire is wound on a fibreglass core and protected by a ceramic body. This construction combines good thermal characteristics with high insulation resistance, and gives good physical protection. Lead length allows vertical or horizontal mounting. If arklone cleaners are used then special sealent is used.

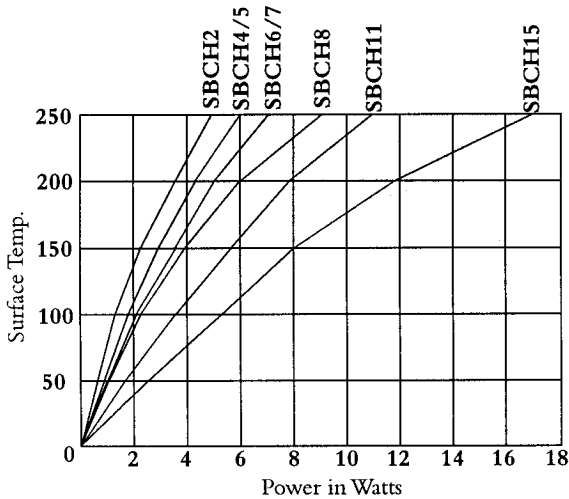
ELECTRICAL

Resistor Values:	Series E24 5% E12 10% (see tables for value limits per style)
Resistor Tolerance:	±5% ± 10%
Max. Continuous Voltage:	$\sqrt{PN \times R}$
Load Life:	±3% 1000 hrs at 70°C
Power Rating:	See Surface Temperature Curve (below)

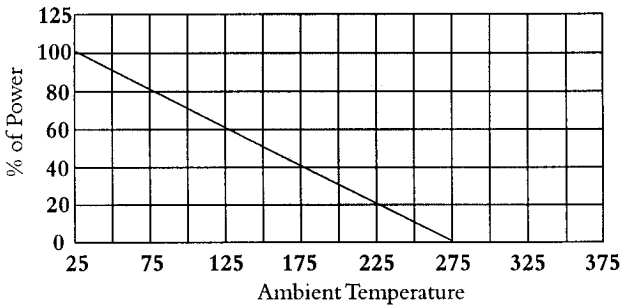
ENVIRONMENTAL & MECHANICAL

Temperature Coefficient of Resistance:	200ppm°C (400 ppm °C below 18R)
Resistance Change due to Solder Heat:	Less than 0.2% (350°C for 2.5 secs)
Voltage Coefficient of Resistance:	Negligible
Temperature Range:	0°C to 70°C
Load Stability:	Less than 5% (full load at 70°C for 1000hrs)
Long Term Damp Heat:	Less than 0.2% (21 days at 40°C for 93% humidity)
Shelf Life:	Less than 1.0% (per 12 months)
Insulation Resistance:	Greater than 10 ⁴ M
Dielectric Strength:	2000V RMS
Lead Material:	Steel - Solder coat
Marking:	Legend mark, Manufacturer name, type, ohmic value and tolerance.

SURFACE TEMPERATURE RISE CURVE



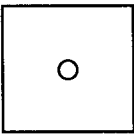
POWER DERATING CURVE



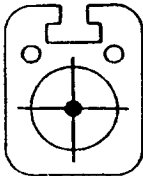
TYPE SBC - SBCH (Axial Power Resistor)

We offer three ceramic profiles for the main wattage sizes. These are for additional heat dissipation and vertical mounting of resistors. The suffix for each style is as follows:-

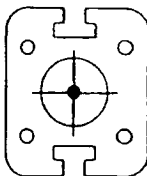
SBC Standard



SBCH 4/5/6/7



SBCH 8/11/15



TYPE SBCHE (For Vertical Mounting)

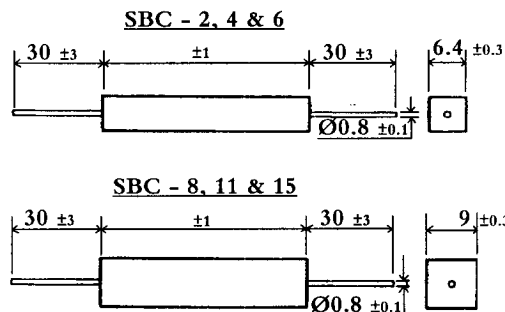
We offer SBCHE Styles with one lengthened lead for vertical mounting. See additional hardware overpage.



Lead Legnth 20mm longer than case length. Supplied with longer lead wrapped back in flute in ceramic

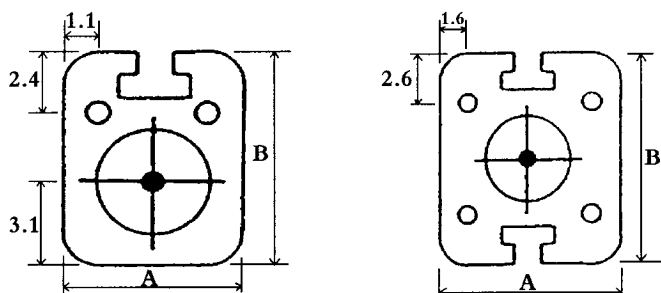
SPECIFICATION (Continued)

TYPE SBC - (NO FLUTES IN CERAMIC)



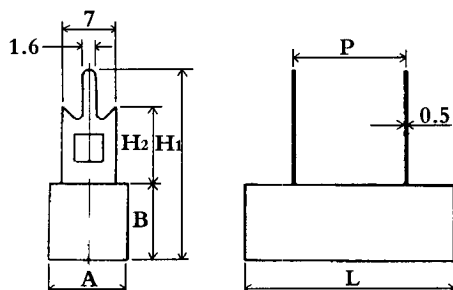
Model	Power Max.	Ohmic Values		Dimensions mm	Weight grams
		Min.	Max.		
SBC-2	4 W	R2	0.1K	6.4x6.4x20	2.3
SBC-4	5 W	R3	3K3	6.4x6.4x25	2.9
SBC-6	7 W	1R0	8K2	6.4x6.4x38	4.2
SBC-8	9 W	1R0	8K2	9x9x38	7.4
SBC-11	11 W	3R3	12K	9x9x50	10.8
SBC-15	17 W	4R7	18K	9x9x75	15.3

TYPE SBCH



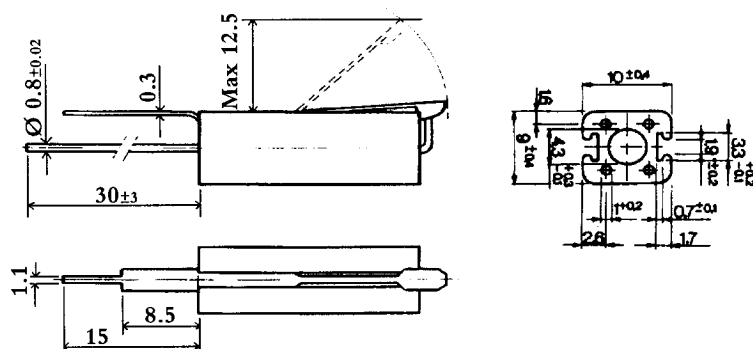
Model	Power Max.	Ohmic Values		Dimensions			Weight grams
		Min.	Max.	A	A	A	
SBCH-4	4 W	R2	6K8	7	8	20	2.2
SBCH-5	5 W	R3	10K	7	8	25	3.5
SBCH-6	7 W	R47	22K	7	8	38	5.0
SBCH-7	7 W	R33	15K	9	10	25	6.0
SBCH-8	9 W	1R0	8K2	9	10	38	8.0
SBCH-11	11 W	1R0	22K	9	10	50	10.0
SBCH-15	17 W	1R0	22K	9	10	75	15.0

TYPE SCPC (RADIAL PLUG-IN STYLE)



Model	Power Max.	Dimensions ± 1mm						Ohmic Values	
		L	A	B	P	H	H	Min.	Max.
SCPC-3	3	22	10	9	10	23	10	OR1	330R
SCPC-5	5	27	10	9	15	25	10	OR1	1K
SCPC-7	7	35	10	9	22.5	25	10	OR1	2K7
SCPC-10	10	50	10	9	37	25	10	OR2	8K2
SCPC-20	20	63	13	12	49	43	25	OR3	15K

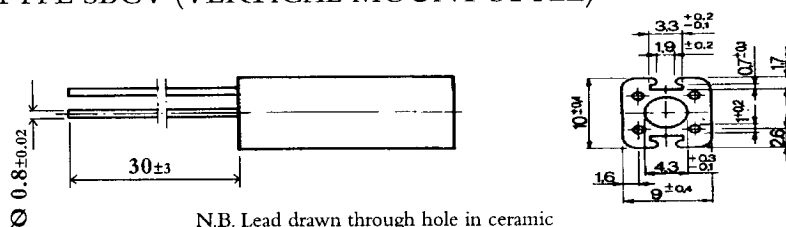
TYPE SBCLF (EXTERNALLY FUSED STYLE)



Model	Power Max.	Ohmic Values		Dimensions mm
		Min	Max	
SBCLF-4	4 W	2R2	2K2	10x9x25
SBCLF-5	5.5 W	2R2	5K6	10x9x38
SBCLF-7	7 W	3R3	8K2	10x9x50
SBCLF-10	10W	4R7	12K	10x9x75

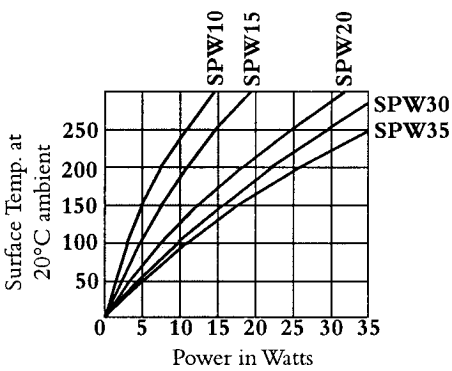
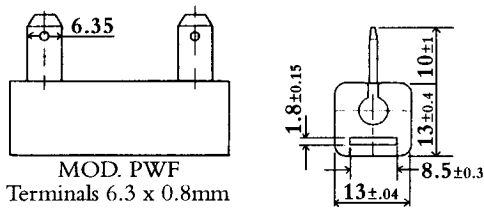
Solder for fuse is SnPb 60:40

TYPE SBCV (VERTICAL MOUNT STYLE)



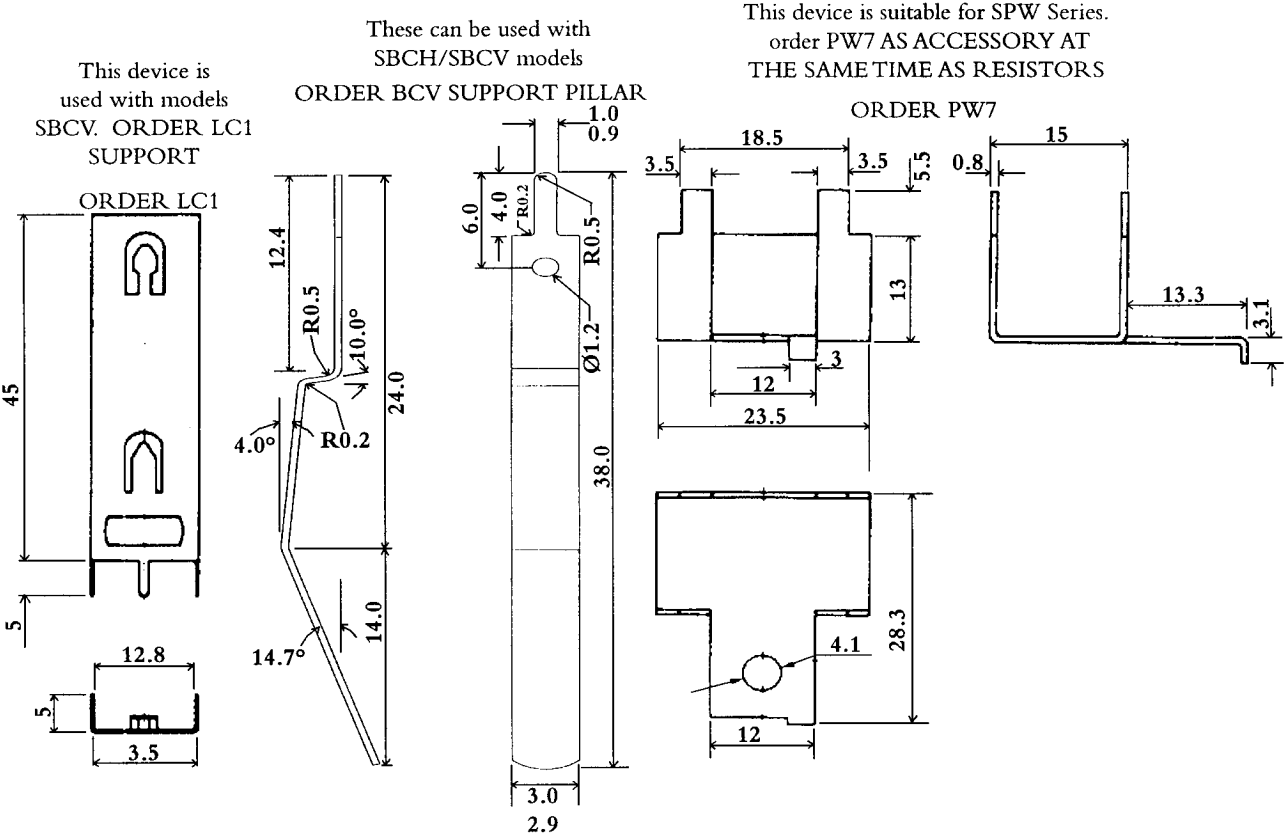
Model	Power Max.	Ohmic Values		Dimensions mm
		Min	Max	
SBCV-6	7W	2.2	2200	10x9x25
SBCV-8	9 W	2.2	5600	10x9x38
SBCV-11	11 W	3.3	8200	10x9x50
SBCV-15	17W	4.7	12000	10x9x75

TYPE SPW (HIGH POWER FASTON STYLE)



Model	Power Max	Ohmic Values Min. max.	Dimensions mm	Weight grms
SPW-10	10W	2R2	13x13x38	14
SPW-15	15W	3R3	13x13x50	20
SPW-20	20W	4R7	13x13x75	32
SPW-30	30W	6R8	13x13x100	46
SPW-35	35W	8R2	13x13x120	59

ACCESSORIES



HOW TO ORDER

N.B. All resistors are supplied with arklone proof seal

COMMON PART	POWER RATING (WATTS)	RESISTOR VALUE	TOLERANCE
SBCH - Axial SBCV-Vertical SBCLF- Vertical fusible SBCHE- Axial one long lead SCPC- Radial with standoffs SPW-Lug type	SEE RELEVANT TABLE	0.1 Ohm (100 mille Ohms) R10 1 Ohm (1000 mille Ohms) 1R0 1 K Ohm (1000 Ohms) 1K0	J = 5% K = 10%