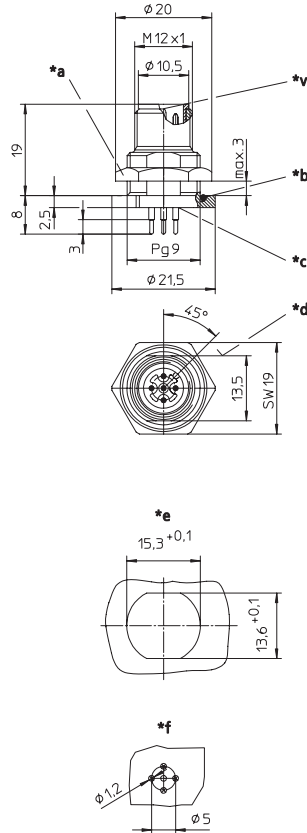


## RSHL /S 5,5

Micro (M12) Male Receptacle Connector for back mounting, print contacts, chassis side thread PG 9 (Panel nut RSKF 9).



- \*a Nut
- \*b O-ring
- \*c Solder contacts potted with epoxy
- \*d Anti-rotation protection
- \*e Cut out of anti-rotation
- \*f Hole pattern in printed circuit board
- \*v Center contact leading

### Technical Data

#### Operating Temperature

-25°C / +80°C

#### Material

Housing / Molded Body

CuZn, nickel-plated

Insert

PA

Contact

CuZn, pre-nickel and 0.8  
microns gold-plated

O-Ring

FKM

#### Mechanical Data

Degree of Protection

IP 67

Only in locked position with  
its proper counterparts.

Mode of Connection

Printed Circuit Board Mount

#### Electrical Data

Contact Resistance

≤ 5 mΩ

Nominal Current at 40°C

4 A

8 Poles: 2 A

#### Nominal Voltage

4 Poles

240 V

5-8 Poles

60 V encapsulated

#### Rated Voltage

4 Poles

250 V

5-8 Poles

63 V

#### Test Voltage

4 Poles

2.0 kV eff. / 60 s

5-8 Poles





1.5 kV eff. / 60 s

Insulation Resistance

> 10<sup>9</sup> Ω

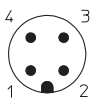
Pollution Degree

3

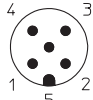
Part Number	Poles	
RSHL 4/S 5,5	4	
RSHL 5/S 5,5	5	
RSHL 5B/S 5,5	5B	
RSHL 8/S 5,5	8	

### Pin Assignments

#### 4 Poles

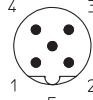


#### 5 Poles



Contact 5 Leading

#### 5 Poles B Coding



Contact 5 Leading

#### 8 Poles

