

KMS Microminiature Side-Actuated Tact Switch for SMT

The KMS is a side-actuated microminiature single pole - single throw switch with a sharp tactile feedback and normally open contacts, compatible with Surface Mount Technology (SMT) process.

A new downsizing step for a side-actuated switch component is achieved:

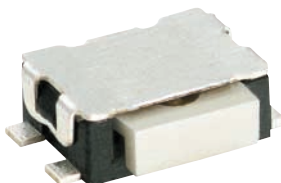
4.6 X 3.5 X 1.42mm

Main applications:

- Mobile phones, radio handsets, pagers
- Personal Data Assistants, notebook computers, portable peripherals
- Medical handheld monitors, personal care electronics
- Consumer electronics, remote controls
- Keyless entry and alarm systems, car electronics
- Digital cameras, CD/DVD and MP3 players

Main features:

- Compact size
- Excellent tactile feel
- Compatible with lead free soldering
- Compatible with infrared reflow soldering
- Compatible with pick & place SMT machines
- Date code marking on each product
- Dust and flux tight
- Hard plastic actuator
- Robust concept
- Ag or Au contact plating
- Grounded cover for ESD protection



Lead Free Compatible

Construction	
Function	Momentary
Contact arrangement	SPST, Normally Open
Terminals	Gullwing Type
Mounting	SMT

Electrical data		
	Silver contacts	Gold contacts
Maximum power	1 VA	0.2 VA
Maximum voltage	50 VDC	50 VDC
Min/max current	1mA/50mA	1mA/10mA
Dielectric strength	250 VDC	250 VDC
Life expectancy	100K operations	100K operations
Contact resistance	≤100 mΩ	≤100 mΩ
Insulation resistance (100VDC)	10 ⁹ Ω	10 ⁹ Ω
Bounce	< 3 ms	< 3 ms

Mechanical data			
Maximum actuating force 20N (4.4 lbs.) during 25,000 cycles			
Operating force/Operating life/Travel			
Actuating force	Life expectancy	Travel to make	Total Travel
2N ±25%	100K operations	0.3 ±0.15 mm	0.45 mm

These characteristics are the same for gold plated contacts versions.

Additional data		
	Silver contacts	Gold contacts
Operating temperature	-40°C + 85°C	-40°C + 125°C
Storage temperature	-55°C + 85°C	-55°C + 125°C
Soldering process	Infrared Reflow	Infrared Reflow

Packaging

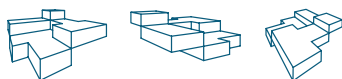
The KMS Tact Switches are delivered in tape and reels of 3,000 pieces. The reel diameter is 330 mm (12.992). The tape dimensions conform to the EIA-RS-481 and EC-286-3 norms.

Ordering code						
	1	2	3	4	5	6
	Example: KM	S	2	2	3	G
1 Designation: KM	→	↑	↑	↑	↑	↑
2 Type: S	→	↑	↑	↑	↑	↑
3 Actuation: 2 = standard	→	↑	↑	↑	↑	↑
4 Actuation force: 2 = 2N (200 grams)	→	↑	↑	↑	↑	↑
5 Contact material: 1 = Silver contact 3 = Gold contact	→	↑	↑	↑	↑	↑
6 Terminals: G = Gullwing type	→	↑	↑	↑	↑	↑

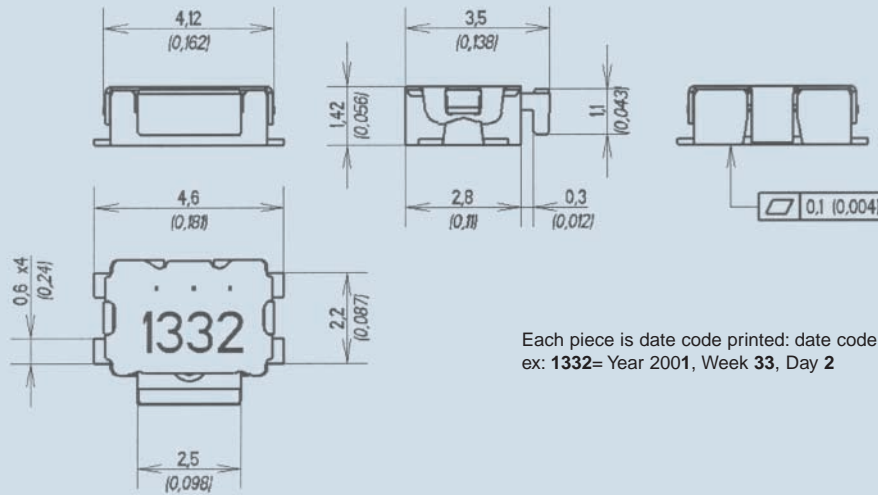
Cannon



ITT Industries
Engineered for life

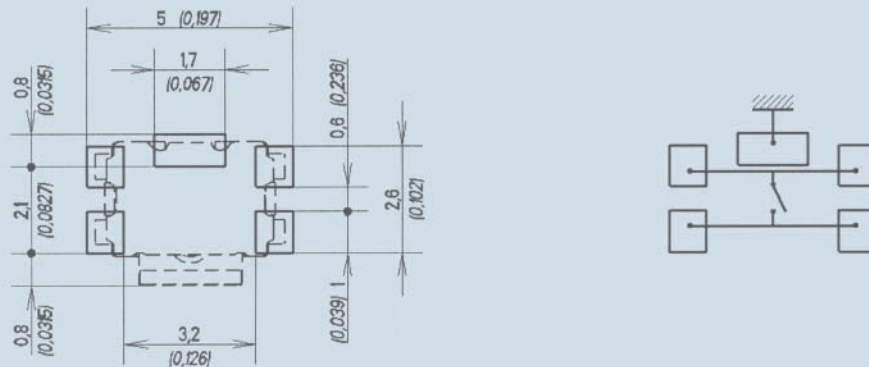


Dimensional Drawings

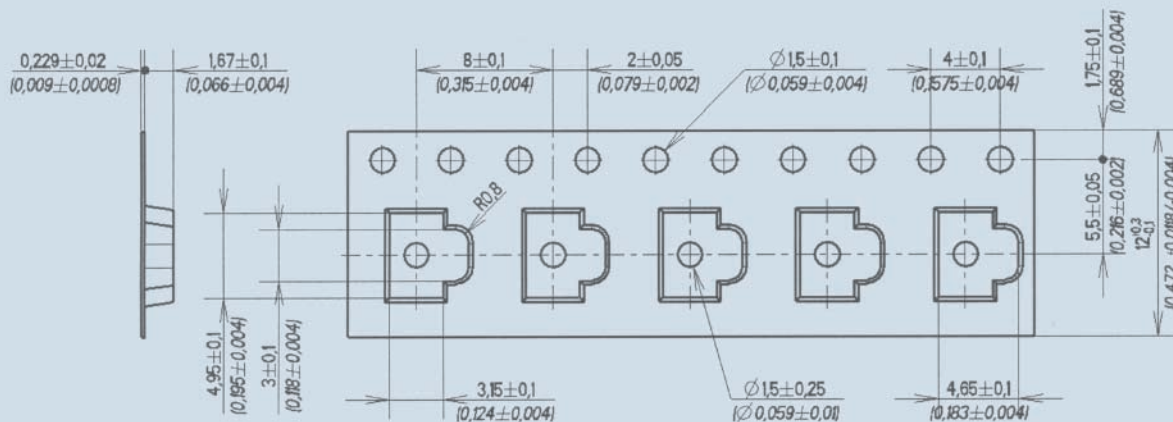


Each piece is date code printed: date code guide:
ex: 1332= Year 2001, Week 33, Day 2

PCB Layout



Packaging



Dimensions are shown in mm (inch)
Dimensions subject to change

FRANCE—World Headquarters

2, Av. des Sablons Bouillants
F-77109 Meaux
Tel +33 (0) 1 60 24 51 51
Fax +33 (0) 1 64 33 16 82

GERMANY

Holzhauser Straße 26-32
D-13509 Berlin
Tel +49 (30) 43 9990
Fax +49 (30) 43 999203

ASIA

901, West Tower, Shun Tak Center
168-200 Connaught Road, Central
Tel +852.2798.6393
Fax +852.2751.9926

UK

Jays Close, Viables Estate
Basingstoke, Hants, RG22 4BW
Tel +44.1256.31.18.50
Fax +44.1256.33.22.14

USA

8081 Wallace Road
Eden Prairie, Minnesota 55344
Tel +1.952.934.4400
Fax +1.952.934.9121

Cannon



www.ittcannon.com

"Engineered for life" is a registered trademark of ITT Industries. ©2000. All other trademarks or registered trademarks are property of their respective owners. All data subject to change without notice.