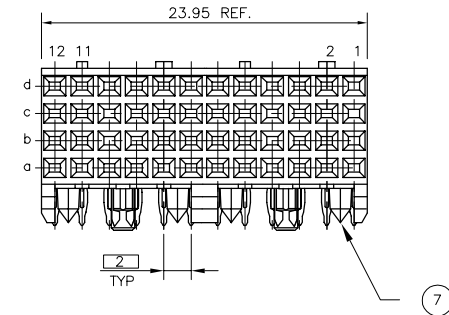
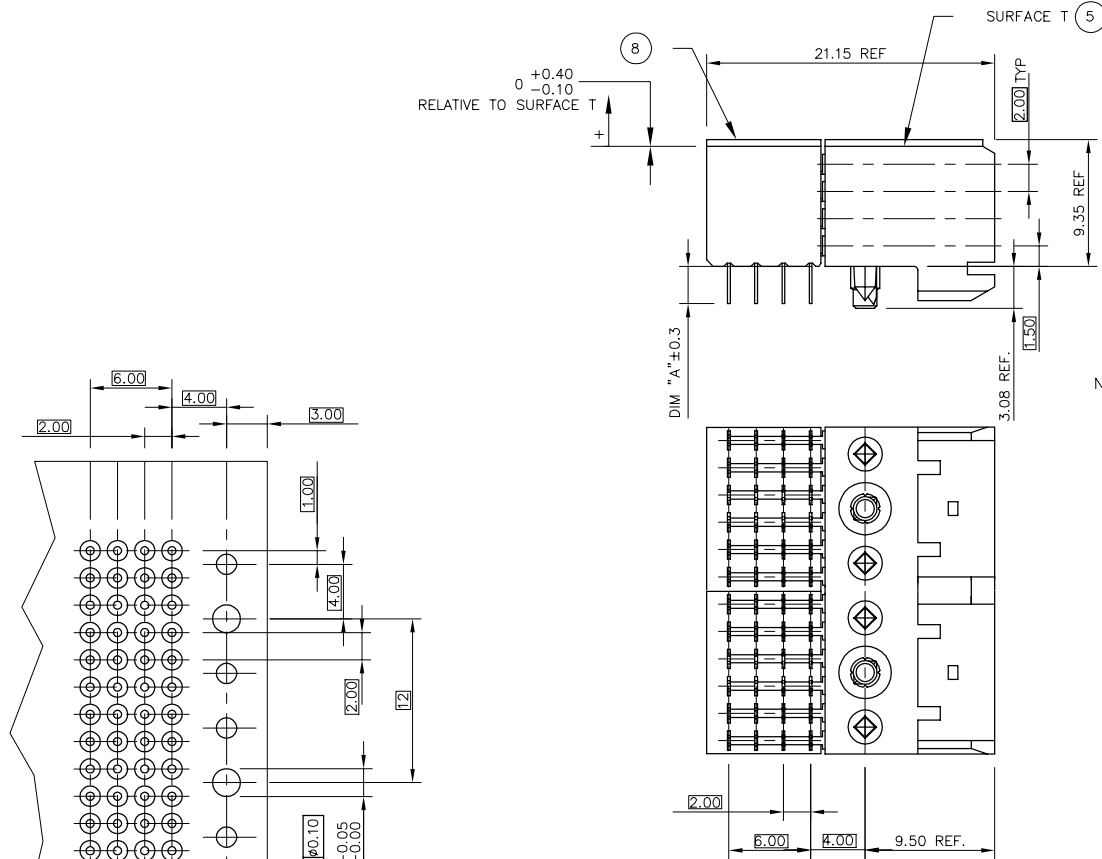


| PRODUCT NUMBER | PCB THICKNESS | DIM "A" |
|----------------|---------------|---------|
| 88946-X02 | 1.6 | 2.73 |
| 88946-X12 | 2.4 | 3.53 |
| 88946-X02LF | 1.6 | 2.73 |
| 88946-X12LF | 2.4 | 3.53 |

| PLATING IN CONTACT AREA | | | |
|-------------------------|------------------------|---------------------------|--|
| PLATING CODE | THICKNESS | UNDERPLATING | |
| 88946-1Y2 | 0.8 μm GOLD | 1.3 μm Ni MIN. | |
| -2Y2 | 2.0 μm GOLD | 1.3 μm Ni MIN. | |
| -3Y2 | 1.3 μm GOLD | 1.3 μm Ni MIN. | |
| -9Y2 | 0.8 μm GXT | 1.3 μm Ni MIN. | |
| -1Y2LF | 0.8 μm GOLD | 1.3 μm Ni MIN. | |
| -2Y2LF | 2.0 μm GOLD | 1.3 μm Ni MIN. | |
| -3Y2LF | 1.3 μm GOLD | 1.3 μm Ni MIN. | |
| 88946-9Y2LF | 0.8 μm GXT | 1.3 μm Ni MIN. | |



NOTES:

- ① CONNECTOR MATERIALS:
HOUSING: LCP, 30% GLASS FILLED,
UL 94-V0 COMPLIANT
TERMINAL: PHOSPHOR BRONZE ALLOY
2. PRESS-FIT TAIL PLATING: 0.5–1.5 μm TIN LEAD
3. PRODUCT SPECIFICATION:
GS-12-002
4. APPLICATION SPECIFICATIONS:
BUS-20-060
GS-20-001
TA-941
- ⑤ PRODUCT MARKING: (PART NUMBER & LOT CODE).
- ⑥ INDICATED HOLES ARE UNPLATED.
- ⑦ LOCATION PEG FEATURES MAY NOT BE AVAILABLE AS SHOWN.
- ⑧ TOP SURFACE OF PRESS BLOCK MAY EXTEND UP TO 0.4MM HIGHER THAN HOUSING. THIS MAY AFFECT THE TAIL LENGTH BEFORE APPLICATION TO A BOARD.
9. THESE PRODUCTS WHERE THE PART NUMBER ENDS IN "LF" MEET THE EUROPEAN UNION DIRECTIVES AND OTHER COUNTRY REGULATIONS AS DESCRIBED IN GS-22-008.


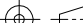

ALL PRODUCTS WILL WITHSTAND EXPOSURE TO 240°C FOR 60 SECONDS IN A CONVECTION, INFRARED OR VAPOR PHASE REFLOW OVEN.
- ⑩ FOR LEAD FREE PART NUMBERS ADD "LF" SUFFIX. EXAMPLE: 88946-XYLFL.

TABLE 1
RU HOLE REQUIREMENTS

| | |
|-----------------------------|------------------------|
| HOLE DIAMETER AFTER PLATING | 0.65–0.80 |
| DRILLED HOLE | 0.81–0.86 (0.85 DRILL) |
| COPPER PLATING | 0.025 – 0.05 |
| SnPb PLATING | 0.005–0.015 |

SEE TABLE 1

RECOMMENDED PC BOARD LAYOUT,
COMPONENT SIDE.

| | | | | | | | | | |
|--------------------------|----------|----------------|--|--------|-----------------|------------------|---|---|--------|
| mat'l. code SEE NOTES | | | tolerances unless otherwise specified | | | CUSTOMER COPY | |  www.fciconnect.com | |
| litr | ecn no | dr | date | linear | .X \pm .3 | | projection  | title B SERIES R/A SIGNAL RECEPT ASSY 4 ROW, 2 MOD, PF | |
| E | V00242 | LSS | 1/18/00 | | .XX \pm .10 | | | | |
| F | V00849 | JWS | 5/31/00 | | .XXX \pm .050 | | | | |
| G | V01960 | JWS | 8/4/00 | angles | 0° \pm 2° | |  scale 1:1 | product family METRAL (tm) | |
| H | V20579 | CGD | 3/20/02 | dr | S.STONER | 10/29/92 | | code | |
| J | V03-0722 | LP | 8/22/03 | engr | R.DOUTRICH | 10/29/92 | | 213 | |
| K | V05-0074 | LP | 4/12/05 | chr | S.STONER | 10/29/92 | | sheet | |
| L | V05-0522 | DAI | 6/8/05 | appd | S.STONER | 10/29/92 | A | | 88946 |
| sheet index | | revision sheet | L 1 | | | | | | 1 of 1 |