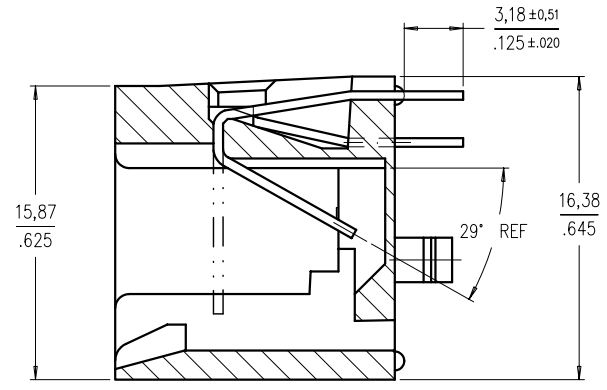
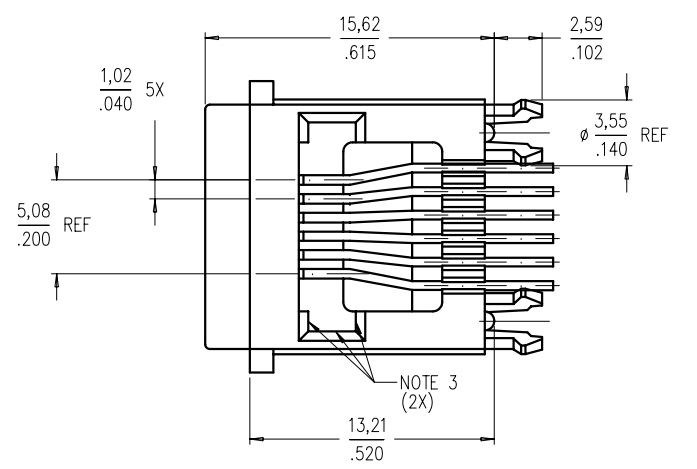
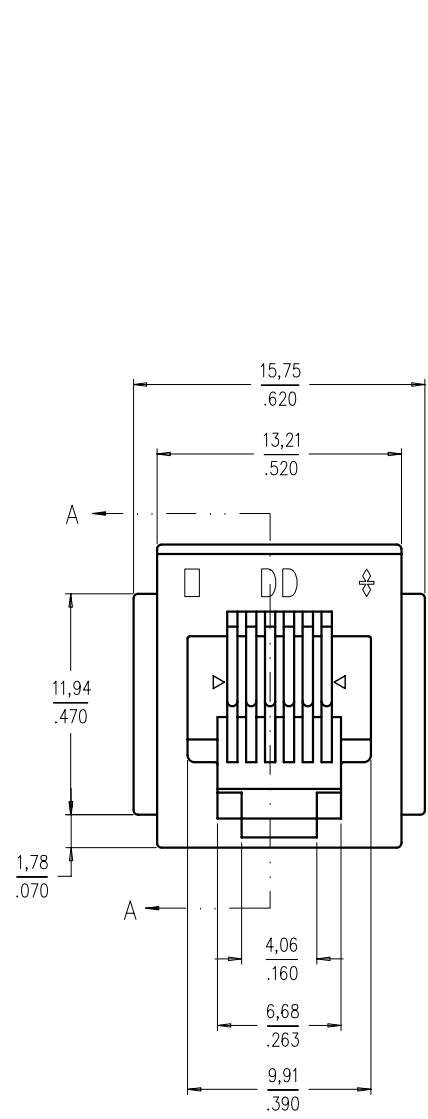


Tous droits strictement réservés. Reproduction ou communication a des tiers interdite sous quelque forme que ce soit sans autorisation écrite du propriétaire.
Propriété de ©FCI ELECTRONICS. Droits de reproduction FCI ELECTRONICS INC.

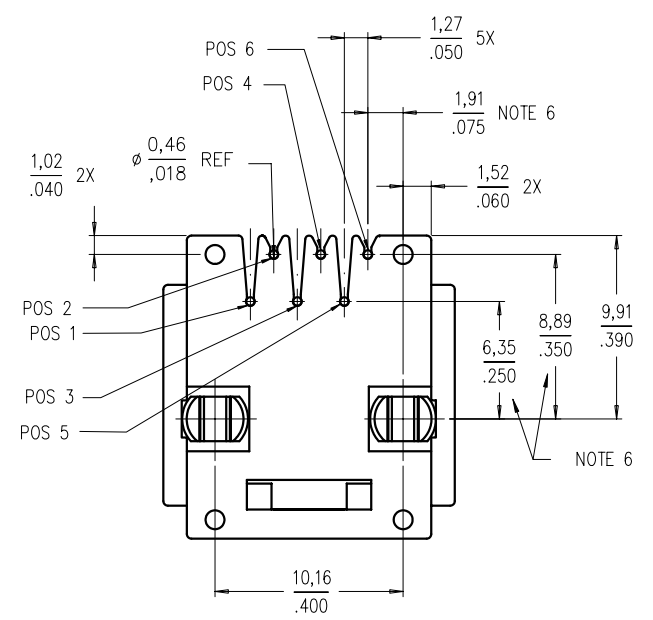
All rights strictly reserved. Reproduction or issue to third parties in any form whatever is not permitted without written authority from the proprietor.
Property of ©FCI ELECTRONICS. Copyright FCI ELECTRONICS INC.



PRODUCT NO.
SEE TABLE



SECTION A-A



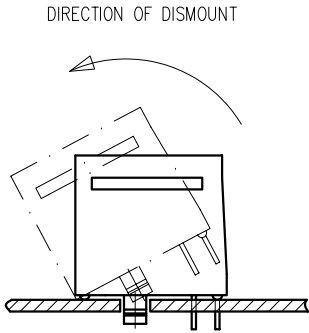
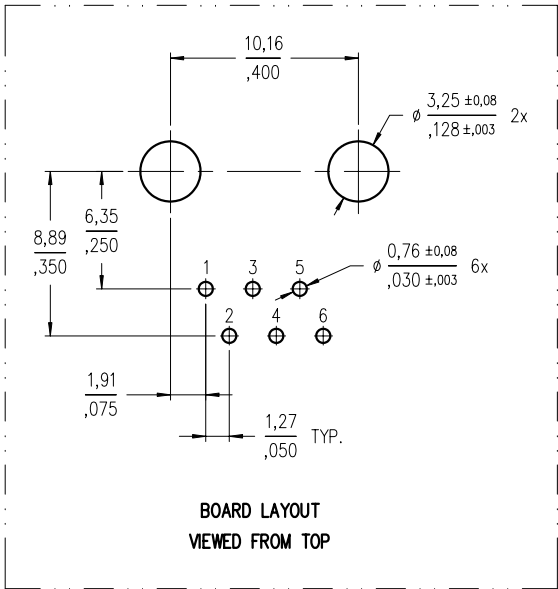
mat'l. code				tolerances unless otherwise specified				CUSTOMER COPY		A FCI	
l	tr	ec	no	dr	date	linear	.X±0.3 / X.XX±.01	projection	title	www.fciconnect.com	
J	V61355	BC	LOH	10/02/96			.XX±0.13 / X.XXX±.005	⊕	6 POS VERT. SNAP PEG		
K	V61824	LW	01/09/97				.XXX±0.051 / X.XXX±.0020	⊕	P.C.B. III MOD JACK ASSY		
L	S70068	BC	LOH	03/20/97		angles	σ±2°	⊕			
M	S00022	BC	LOH	01/26/00	dr	YS.DING	11/23/04	MM	product family	MOD JACK	code
N	N04-0102	YS		11/23/04	enr	YS.DING	11/23/04	INCH	size	dwg no	—
					chr	YS.DING	11/23/04	scale	A3	90512	sheet
					appd	JASON.ZHOU	11/23/04	3:1			1 of 2
sheet index	revision sheet	N	N	1	2						

Tous droits strictement reserves. Reproduction ou communication a des tiers interdite sous quelque forme que ce soit sans autorisation écrite du propriétaire.
Propriete de ©FCI ELECTRONICS.
Droits de reproduction FCI ELECTRONICS INC.

All rights strictly reserved. Reproduction or issue to third parties in any form whatever is not permitted without written authority from the proprietor.
Property of ©FCI ELECTRONICS
Copyright FCI ELECTRONICS INC.

PRODUCT NO.	POSITIONS LOADED	CONTACT PLATING	NOTES
90512-001 -001LF	ALL	GXT	BLACK
-002 -002LF	ALL	30u" / ,76u Au	BLACK
-003 -003LF	2,3,4,5	GXT	BLACK
-004 -004LF	2,3,4,5	50u" / 1,27u Au	BLACK
-005 -005LF	3,4	GXT	BLACK
-006 -006LF	ALL	GXT	GREY
-007 -007LF	ALL	30u" / ,76u Au	GREY
-008 -008LF	3,4	GXT	GREY

LEAD FREE PRODUCT NO.



JACK DISMOUNT METHOD

DETAIL A
NOTE 5

PRODUCT NO.	POSITIONS LOADED	CONTACT PLATING	REMARKS
90512-101 -101LF	ALL	GXT	NOT TOOLED
-102 -102LF	ALL	30u" / ,76u Au	NOT TOOLED
-103 -103LF	2,3,4,5	GXT	NOT TOOLED
-104 -104LF	2,3,4,5	50u" / 1,27u Au	NOT TOOLED
-105 -105LF	3,4	GXT	NOT TOOLED

NOTES :

- P/NO WITH DASH 0XX -NORMAL WAVE SOLDERING APPLICATION.
P/NO WITH DASH 1XX -1R REFLOW APPLICATION (NOT TOOLED).
- PACKAGING SPEC. BUS-14-164.
- SCRATCH MARKS ACCEPTABLE ON THESE SURFACES.
- JACK IS FOR 1,57/,062 THICK PCB.
- SHOULD THE JACK NEED TO BE DISMOUNTED FROM THE PCB, PLS REMOVE JACK AS PER RECOMMENDED METHOD HEREIN. (DETAIL A) NIPPING THE LEGS OF THE PEG TOGETHER IS DISALLOWED, OTHERWISE LEG BREAKAGE MAY OCCUR.
- THESE DIMENSIONS ARE TAKEN FROM THE TOP OF THE PEG.
- GXT IS 0,76um / 30u" MIN GXT WITH Au FLASH OVER 1,27 um / 50u" MIN Ni.
- THIS PRODUCT MEETS EUROPEAN UNION DIRECTIVES AND OTHER COUNTRY REGULATIONS AS DESCRIBED IN GS-22-009
- THE HOUSING WILL WITHSTAND EXPOSURE TO 260°C PEAK TEMPERATURE FOR 10 SECONDS IN A WAVE SOLDER APPLICATION WITH A 1.57mm MINIMUM THICK CIRCUIT BOARD
- IF LF P/N PACKAGING MEETS GS-14-920 SPECIFICATION

mat'l. code				tolerances unless otherwise specified		CUSTOMER COPY		A FCI	
ltr	ecn no	dr	date	linear	.X±0.3 / X.XX±.01	projection	title	www.fciconnect.com	
N					.XX±0.13 / X.XXX±.005		6 POS VERT. SNAP PEG P.C.B. III MOD JACK ASSY		
				angles	.XXX±0.051 / X.XXXX±.0020 σ±2°				
				dr	YS.DING 11/23/'04		product family MOD JACK size dwg no	code	
				enr	YS.DING 11/23/'04			-	
				chr	YS.DING 11/23/'04	scale 3:1	A3	sheet	
				appd	JASON.ZHOU 11/23/'04			2 of	
sheet index	revision sheet								