

Tous droits strictement reserves. Reproduction ou communication a des tiers interdite sous quelque forme que ce soit sans autorisation ecrite du proprietaire. Propriete de c FCI. Droits de reproduction FCI.

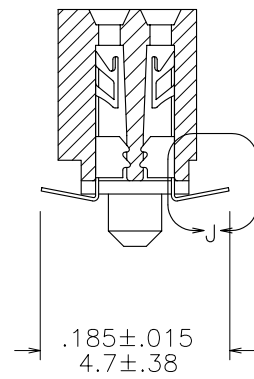
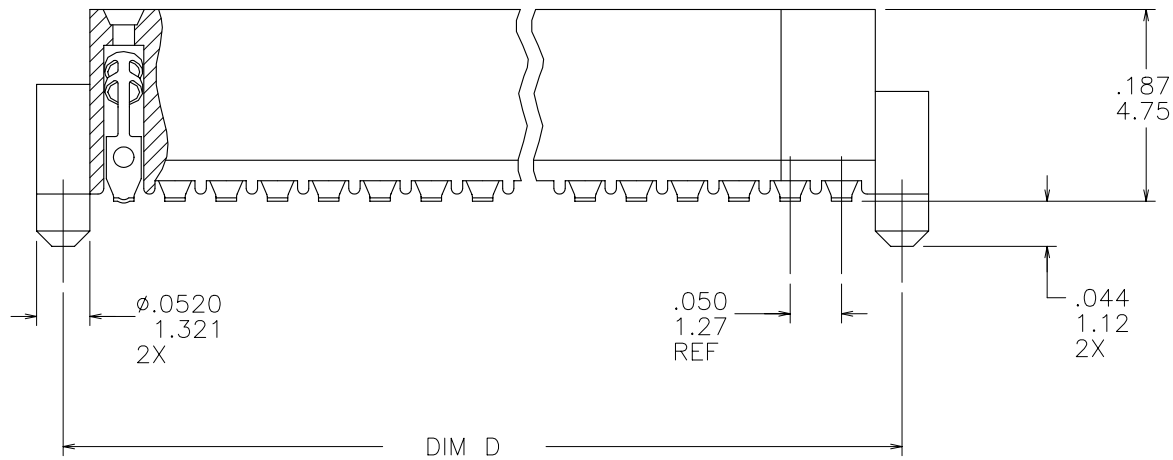
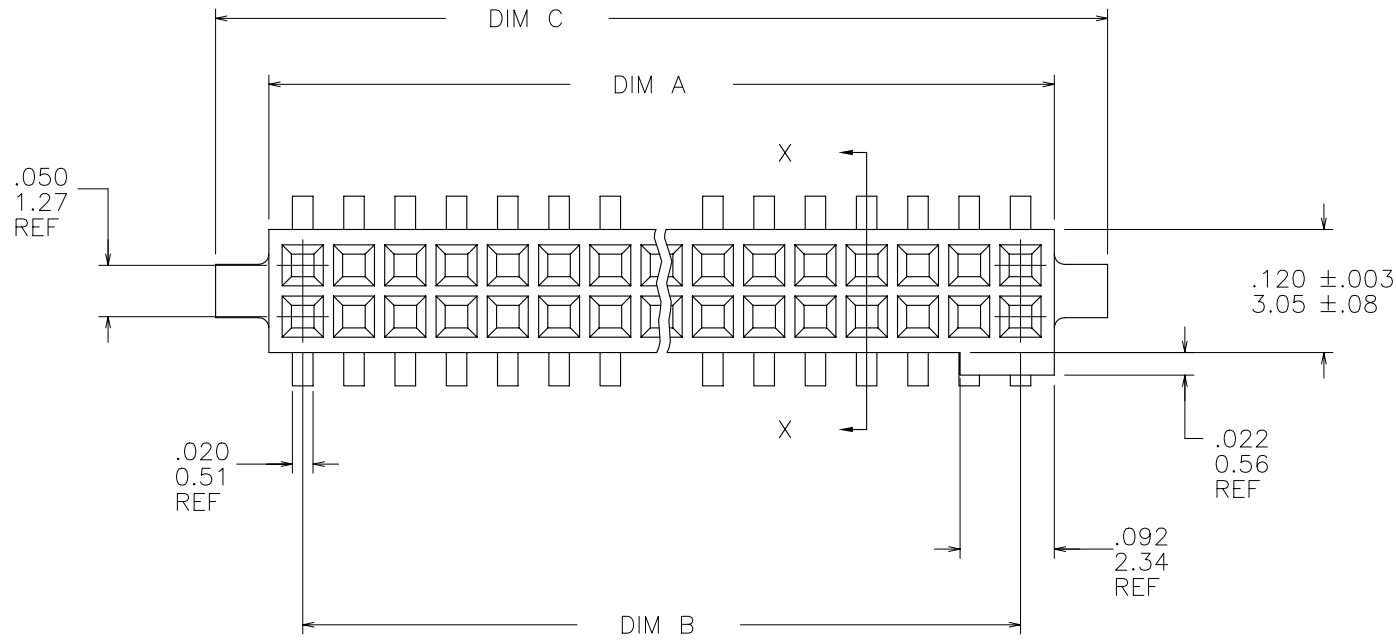


All rights strictly reserved. Reproduction or issue to third parties in any form whatever is not permitted without written authority from the proprietor. Property of FCI. Copyright FCI.

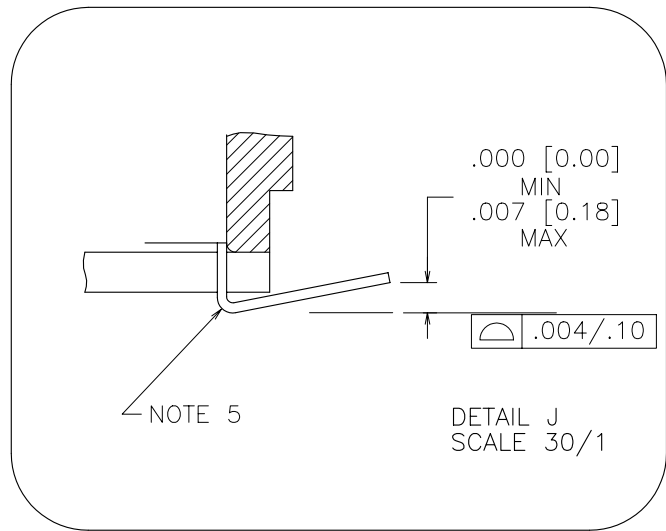
A

B

PRODUCT NUMBER  
SEE TABLE



SECTION X-X



mat'l. code				tolerances unless otherwise specified			CUSTOMER COPY	FCI Electronics www.fciconnect.com			
ltr	ecn no	dr	date		.XX ±.01/.X±.3			title			
S	V61724	MDF	1/15/97	linear	.XXX ±.005/.XX±.13		projection	.050 CC VERT. SMT.			
T	V80708	EPK	4/15/98		.XXX ±.0020/.XXX±.051			W/LOC. & POL. FEATURE			
U	V81319	EPK	8/27/98	angles	0° ±2°			product family RIBCAGE			
V	V02780	DLW	12/1/00	dr	M. CLOUSER	6/26/91	INCH/MM	size dwg no			
W	V10994	DLW	3/9/01	engr	B. BARUFFALO	6/26/91		A 87024			
X	V11674	CRG	7/3/01	chr	B. BARUFFALO	6/26/91	scale	code			
Y	V20420	CRG	2/28/02	appd	B. BARUFFALO	6/26/91		sheet 1 of 3			
sheet index		revision sheet		Y	Y	V					
				1	2	3					

A

B

cage code  
22526

ACAD



PRODUCT NUMBER	SIZE	DIM A	DIM B	DIM C	DIM D	SPECIAL PACKAGING	TAPE WIDTH PITCH	PIECES PER REEL
87024-605	2 X 5	.266/6.756	.200/5.08	.370/9.398	.3200/8.128	NOTE 6	24mm 12mm	750
-610	2 X 10	.516/13.106	.450/11.43	.620/15.748	.5700/14.478	NOTE 6	24mm 12mm	750
-610P	2 X 10	.516/13.106	.450/11.43	.620/15.748	.5700/14.478	NOTE 8	24mm 16mm	500
-615	2 X 15	.766/19.456	.700/17.78	.870/22.098	.8200/20.828	NOTE 6	44mm 12mm	500
-620	2 X 20	1.016/25.806	.950/24.13	1.120/28.448	1.0700/27.178	NOTE 7	-----	
-625	2 X 25	1.266/32.156	1.200/30.48	1.370/34.798	1.3200/33.528	NOTE 6	56mm 12mm	500
-630	2 X 30	1.516/38.506	1.450/36.83	1.620/41.148	1.5700/39.878	NOTE 6 & 7	56mm 12mm	500
-635	2 X 35	1.766/44.856	1.700/43.18	1.870/47.498	1.8200/46.228	NO	-----	
-640	2 X 40	2.016/51.206	1.950/49.53	2.120/53.848	2.0700/52.578	NOTE 7	-----	
-645	2 X 45	2.266/57.556	2.200/55.88	2.370/60.198	2.3200/58.928	NO	-----	
87024-650	2 X 50	2.516/63.906	2.450/62.23	2.620/66.548	2.5700/65.278	NOTE 7	-----	

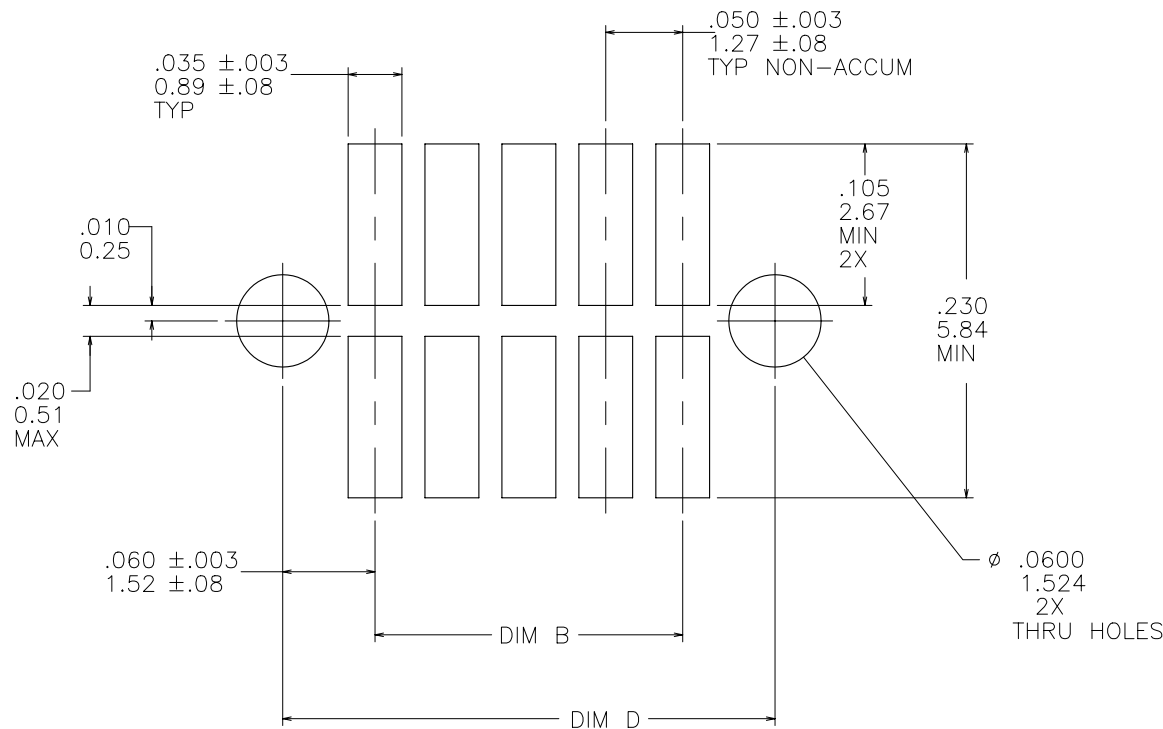

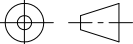



FIGURE A  
RECOMMENDED  
P.C.B. LAYOUT

NOTES:

- HOUSING MATERIAL:  
GLASS FILLED THERMOPLASTIC FLAME RETARDANT PER UL 94V-0  
COLOR: BLACK
- TERMINAL MATERIAL: BeCu
- TERMINAL PLATING:  
30u"/.76u MIN HARD GOLD OVER Ni ON CONTACT ZONES,  
100u"/2.54u MIN TIN LEAD OVER Ni IN SOLDERING ZONES,  
OTHERWISE GOLD FLASH OR UNPLATED.
- APPLICATION INFORMATION:  
A. RECOMMENDED MOUNTING PAD PATTERN IS  
SHOWN IN FIGURE "A".  
B. MATING PINS TO BE .0176/.447 TO .0181/.459 DIA.  
C. MATING PIN TIPS TO BE IN TRUE POSITION TO MATING  
GRID WITHIN .006/.15 DIA.  
D. SUGGESTED MATING PIN LENGTH .130/3.30  
±.010/.25.  
5. LEAD TIPS TO BE ABOVE HEEL, UP TO .007/0.18 MAX.  
COPLANARITY TO BE MEASURED AT LOWEST POINT (HEEL).  
6. ADD "TR" TO END OF DASH NUMBER FOR TAPE AND  
REEL PACKAGING WITH CAP.  
TOOLED ONLY FOR NOTED CONNECTORS.  
7. ADD "CT" TO END OF DASH NUMBER FOR CONNECTOR WITH CAP FOR  
VACUUM PICKUP IN TUBE.  
8. CUSTOMER SPECIAL, TAPE AND REEL PACKAGING, TOOLED  
ONLY FOR NOTED CONNECTOR.

mat'l. code				tolerances unless otherwise specified				CUSTOMER COPY				 Electronics FCI www.fciconnect.com																																																																																																																																																																																																																																																																																																																																																																																																																																																																																																																																																																																																																																																																																																																																																																																																																																																																																																																																																																																																																																																																																																																																																																																																																															
ltr	ecn no	dr	date	linear	.XX ±.01/.X±.3				projection 	title .050 CC VERT. SMT. W/LOC. & POL. FEATURE																																																																																																																																																																																																																																																																																																																																																																																																																																																																																																																																																																																																																																																																																																																																																																																																																																																																																																																																																																																																																																																																																																																																																																																																																																	
Y					.XXX ±.005/.XX±.13																																																																																																																																																																																																																																																																																																																																																																																																																																																																																																																																																																																																																																																																																																																																																																																																																																																																																																																																																																																																																																																																																																																																																																																																																																						
					.XXXX ±.0020/.XXX±.051																																																																																																																																																																																																																																																																																																																																																																																																																																																																																																																																																																																																																																																																																																																																																																																																																																																																																																																																																																																																																																																																																																																																																																																																																																						
				angles	0° ±2°					product family RIBCAGE code —																																																																																																																																																																																																																																																																																																																																																																																																																																																																																																																																																																																																																																																																																																																																																																																																																																																																																																																																																																																																																																																																																																																																																																																																																																	
				dr	M. CLOUSER	6/26/91																																																																																																																																																																																																																																																																																																																																																																																																																																																																																																																																																																																																																																																																																																																																																																																																																																																																																																																																																																																																																																																																																																																																																																																																																																					
				enrg	B. BARUFFALO	6/26/91		scale 6:1	size dwg no A 87024 sheet 2 of																																																																																																																																																																																																																																																																																																																																																																																																																																																																																																																																																																																																																																																																																																																																																																																																																																																																																																																																																																																																																																																																																																																																																																																																																																		
				chr	B. BARUFFALO	6/26/91																																																																																																																																																																																																																																																																																																																																																																																																																																																																																																																																																																																																																																																																																																																																																																																																																																																																																																																																																																																																																																																																																																																																																																																																																																					
				appd	B. BARUFFALO	6/26/91																																																																																																																																																																																																																																																																																																																																																																																																																																																																																																																																																																																																																																																																																																																																																																																																																																																																																																																																																																																																																																																																																																																																																																																																																																					
sheet index	revision sheet																																																																																																																																																																																																																																																																																																																																																																																																																																																																																																																																																																																																																																																																																																																																																																																																																																																																																																																																																																																																																																																																																																																																																																																																																																										

Tous droits strictement reserves. Reproduction ou communication a des tiers interdite sous quelque forme que ce soit sans autorisation ecrite du proprietaire. Propriete de c FCI. Droits de reproduction FCI.



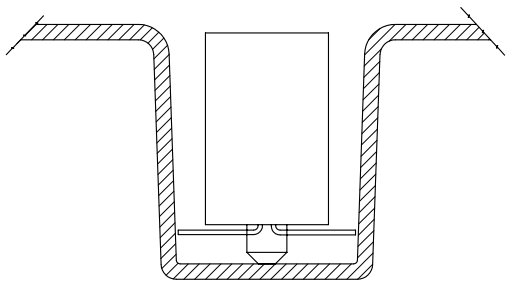
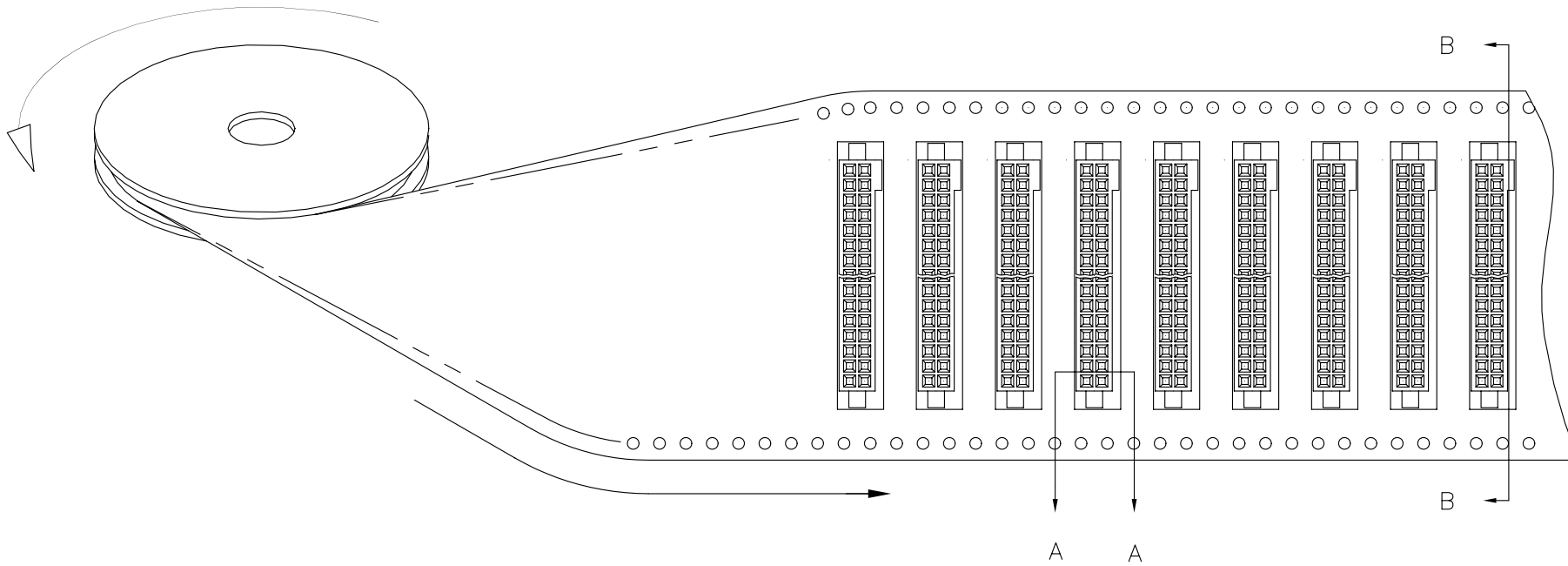
All rights strictly reserved. Reproduction or issue to third parties in any form whatever is not permitted without written authority from the proprietor. Property of FCI. Copyright FCI.

B

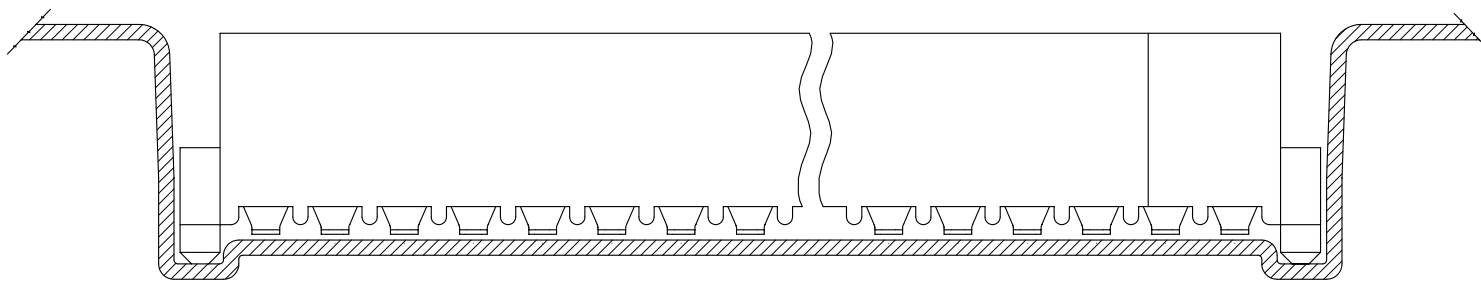
UNREELING  
DIRECTION

REFERENCE ONLY


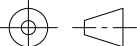

TAPE WIDTH'S 32mm AND ABOVE HAS BOTH FEED TRACKS,  
BELOW 32mm HAS TOP FEED TRACK ONLY.



SECTION A-A



SECTION B-B

mat'l. code				tolerances unless otherwise specified				CUSTOMER COPY			 Electronics FCI www.fciconnect.com																																																																																																																																																																																																																																																																																																																																																																																																																																																																																																																																																																																																																																																																																																																																																																																																																																																																																																																																																																																																																																																																																																																																																																																																																																													
ltr	ecn no	dr	date	linear	.XX ±.01/.X±.3				projection 	title .050 CC VERT. SMT. W/LOC. & POL. FEATURE																																																																																																																																																																																																																																																																																																																																																																																																																																																																																																																																																																																																																																																																																																																																																																																																																																																																																																																																																																																																																																																																																																																																																																																																																																														
v					.XXX ±.005/.XX±.13																																																																																																																																																																																																																																																																																																																																																																																																																																																																																																																																																																																																																																																																																																																																																																																																																																																																																																																																																																																																																																																																																																																																																																																																																																																			
					.XXXX ±.0020/.XXX±.051																																																																																																																																																																																																																																																																																																																																																																																																																																																																																																																																																																																																																																																																																																																																																																																																																																																																																																																																																																																																																																																																																																																																																																																																																																																			
				angles	0° ±2°					product family RIBCAGE size dwg no A 87024																																																																																																																																																																																																																																																																																																																																																																																																																																																																																																																																																																																																																																																																																																																																																																																																																																																																																																																																																																																																																																																																																																																																																																																																																																														
				dr	M. CORNMAN	8/6/92		scale 3:1														code — sheet 3 of																																																																																																																																																																																																																																																																																																																																																																																																																																																																																																																																																																																																																																																																																																																																																																																																																																																																																																																																																																																																																																																																																																																																																																																																																																		
				enr	J. SHUEY	8/6/92																																																																																																																																																																																																																																																																																																																																																																																																																																																																																																																																																																																																																																																																																																																																																																																																																																																																																																																																																																																																																																																																																																																																																																																																																																																		
				chr	J. SHUEY	8/6/92																																																																																																																																																																																																																																																																																																																																																																																																																																																																																																																																																																																																																																																																																																																																																																																																																																																																																																																																																																																																																																																																																																																																																																																																																																																		
				appd	J. SHUEY	8/6/92																																																																																																																																																																																																																																																																																																																																																																																																																																																																																																																																																																																																																																																																																																																																																																																																																																																																																																																																																																																																																																																																																																																																																																																																																																																		

cage code  
22526

ACAD