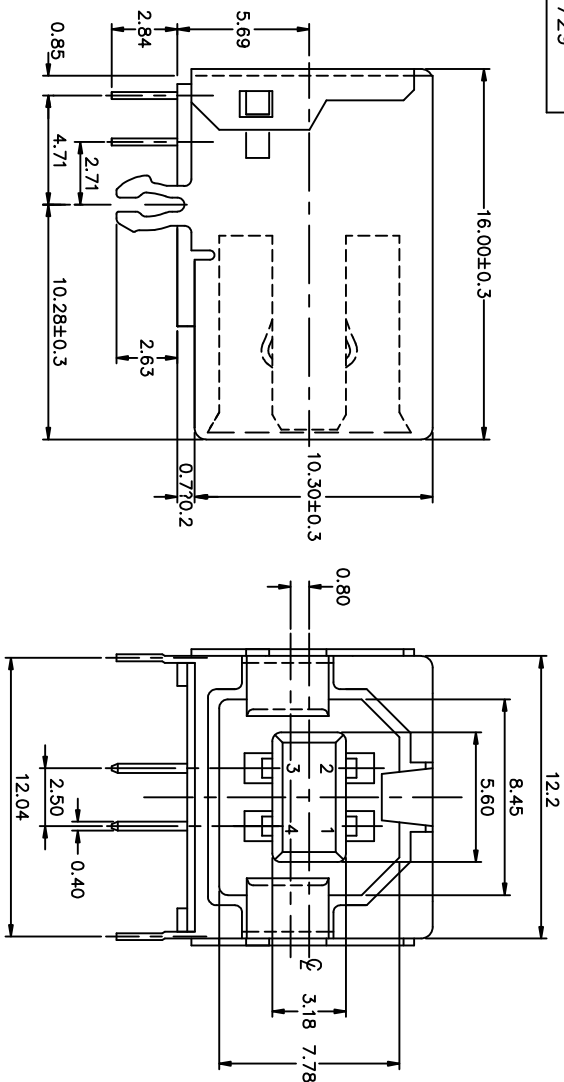


PRODUCT NO.

61729

**PRODUCT NUMBER CODE**



BASE PRODUCT NUMBER

### HOUSING COLOR OPTION

0 - WHITE  
1 - BLACK

### SHIELD OPTION

1 - FULL BACK  
2 - PARTIAL BACK

### TERMINAL PLATING OPTION

0 - 50u" NI UNDERPLATED  
3011" GXT CONTACT AREA

100u" TIN/LEAD TAIL AREA

FOR P/N'S WITHOUT SUFFIX "LF"  
100% PIPE TIN TAIL AREA

FOR P/N'S WITH SU

1 - 50u" NI UNDERPLATED

300 GOLD CONIAC AREA  
1000" TN/HEAD TAIL AREA

FOR P/N'S WITHOUT SUFFIX "LF"

100u" PURE TIN TAIL AREA  
FOR P/N'S WITH SILEX "JE"

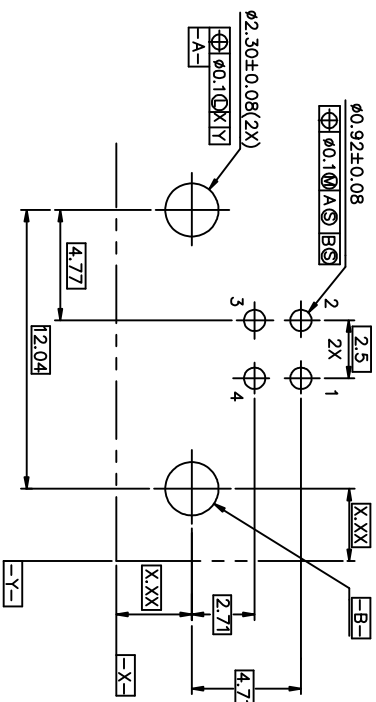
### PACKAGING OPTION

B-TUBES  
R-TAPE & REEL


DATE CODE OPTION

ONLY FOR PANASONIC

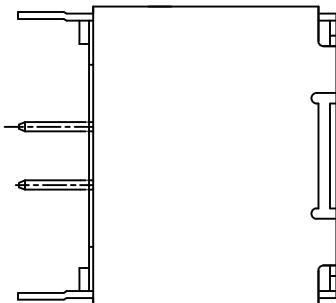
LEAD FREE OPTION



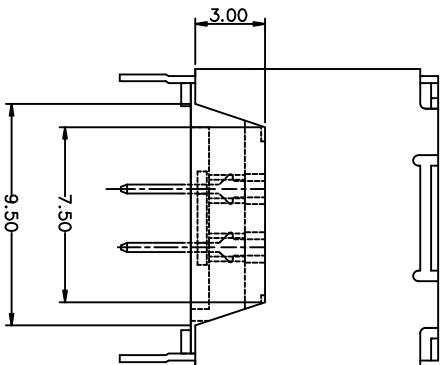
## P.C. BOARD LAYOUT

mat'l. code		tolerances unless otherwise specified			CUSTOMER COPY		A FCI www.fciconnect.com	
lfr	ecn no	dr	date	.0 ± 0.30	projection 	title USB RECEPTACLE B TYPE	product family USB	code
S	N05-0242	PH	06/22/06	.00 ± 0.20				
T	N06-0103	HH	04/15/06	.0004 ± 0.10				
				angles ± 2°				
M	120282	W L	06/12/02	dr SHURELY HSL 03/03/97	MM/INCH			
N	N03-0365	W L	06/09/03	engr R Y UU 03/03/97	↔			
P	T04-0206	W L	06/13/04	chr R Y UU 03/03/97	scale			
R	N04-0130	PH	12/22/04	dpdd JENN TSA003/03/97	4 : 1	A3	61729	sheet 1 of 2
sheet index	revision	T	P					
	sheet	1	2					

PRODUCT NO.  
61729



## TYPE"1" FULL BACK



## TYPE"2" PARTIAL BACK

### NOTES:

1. MATERIAL:  
SHIELD & CONTACTS: COPPER ALLOY  
HOUSING: UL 94V-0 THERMOPLASTIC. COLOR: SEE PRODUCT NUMBER CODE.
2. PLATING: SEE PRODUCT NUMBER CODE.  
SHIELD: BRIGHT TIN  
NICKEL UNDERPLATE.
3. DATUMS & BASIC DIMENSIONS TO BE DETERMINED BY CUSTOMER
4. RECOMMENDED BOARD THICKNESS IS 1.57 mm (.062)
5. PACKING STANDARD GS-14-920 WILL BE APPLIED FOR LEAD FREE P/N'S
6. FOR LEAD FREE P/N, THE PRODUCT MEET EUROPEAN UNION DIRECTIVES AND OTHER COUNTRY REGULATION AS DESCRIBED IN GS-22-008
7. FOR LEAD FREE P/N'S, THE HOUSING WILL WITHSTAND EXPOSURE TO 260°C PEAK TEMPERATURE FOR 40 SECONDS IN A CONNECTION, INFRO-RED OR VAPOR PHASE REFLOW OVEN.

mat'l. code			tolerances unless otherwise specified			CUSTOMER		title		product family		code	
ltr	pcn no	dr	date	linear		projection	copy	FCI	Electronics	USB RECEPTACLE B TYPE	USB	code	sheet
P				.00 ± 0.10	.000 ± 0.05	± 2°				61729		2 of 2	
				angles									
				dr									
				engr									
				chr									
				dpdd									
sheet	revision												
index	sheet												