

## DIP-FIX make contact

## FEATURES:

- Make contact in the form of 8 or 24 section in-line switch (8 or 24 switches)
- Changeover contact in the form of 4 or 12-section in-line switch (4 or 12 switches)
- Terminal with standard drilling raster of pitch 2.54 x 7.62 mm
- Individual switches can be detached from the multi-section in-line switch with a knife
- The in-line switch can also be detached from the multi-section in-line switch with a knife
- The in-line switch can also be supplied in a smaller version if there is sufficient demand. Order designation for e.g. 3 make contacts: C42315-A1347-A103
- Operating tools (accessories) for actuating the switches; ball=point pens with fitted plastic prong

## MATERIAL SPECIFICATIONS:

Insulating materials .....PBTP-GF  
 Contact surface .....Sn Pb - whisker-proof  
 Surface of the terminals .....Sn Pb - whisker-proof

## TECHNICAL DATA:

Load capability, measuring and test methods in accordance with IEC 68 and DIN 41640 or IEC 512

Voltage Rating .....10 mV to 60 V

Current Rating .....≤ 0.5 A

Power Rating .....≤ 5 W

} Connection not soldered<sup>1)</sup>

Service Life

Mechanical and Electrical

with Resistive Load..... 50 Switching Cycles

Contact Resistance

(millivolt method).....≤ 100 mΩ; 2)

.....≤ 200 mΩ; 3)

Insulation Resistance .....≥ 10<sup>5</sup> MΩ; 2)

.....≥ 10<sup>3</sup> MΩ; 3)

Creeping Distances .....≥ 1 mm

Air Gaps .....≥ 0.5 mm

Test Voltage.....500 V, 50 Hz

Ambient Temperature Range ..-40°C to +85°C

## NOTES ON PROCESSING:

- Blister Packaging
- Processing class D<sup>4)</sup> (with open or closed contacts)

<sup>1)</sup> Safeguarding in the ON position is possible by manual soldering, if required

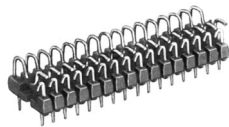
<sup>2)</sup> Initial value

<sup>3)</sup> After prolonged use

<sup>4)</sup> Identical to Class C; ultrasonic assistance may also be used for cleaning.

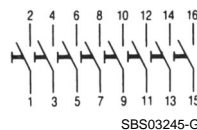
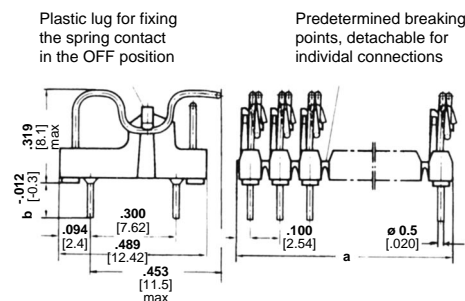
## DIP-FIX MAKE CONTACT

(8 OR 24-SECTION IN-LINE SWITCHES<sup>1)</sup>)



ECH1526-R

<sup>1)</sup> Other contact arrangements on request

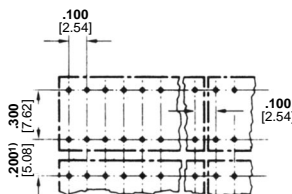


Circuit diagram and recommended coding for the connectors (example: 8 make contacts)

## MOUNTING HOLES AND PACKING DENSITY DIP-FIX MAKE CONTACT

<sup>1)</sup> Other contact arrangements on request

<sup>6)</sup> Preferred items



Hole diameter with tolerance classes in accordance with DIN 40803, Sheet 1, Point 3.4.2.1.:  
 coarse ≥ 0.9mm  
 moderate ≥ 0.8mm  
 fine ≥ 0.8mm

Make Contact	Dimension a	Dimension b	Order Designation
8-section in-line switch	.812 [20.32]	.122 [3.1]	C42315-A1347-A108 <sup>6)</sup>
24-section in-line switch	2.387 [60.62]	.122 [3.1]	C42315 -A1347-A124 <sup>6)</sup>

Note: The switches are delivered unhooked

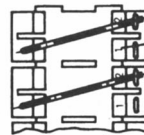
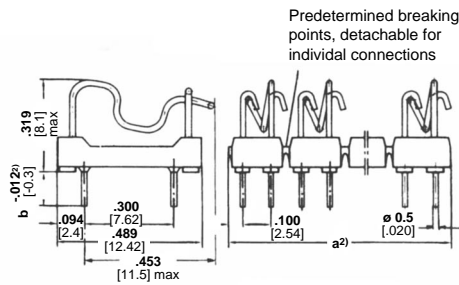
## DIP-FIX changeover contact

### DIP-FIX CHANGEOVER CONTACTS

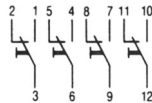
(4 OR 12-SECTION IN-LINE SWITCHES)



ECH1527-Z



Identification numbers  
for switch position

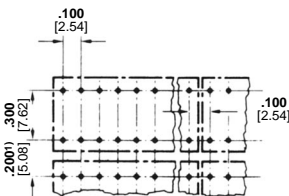


SBS0348-6

Circuit diagram and recommended  
coding for the connectors  
(example: 4 changeover switches)

### MOUNTING HOLES AND PACKING DENSITY DIP-FIX CHANGEOVER CONTACT

- 1) Other contact arrangements on request
- 5) With identification numbers for switch position
- 6) Preferred items



Hole diameter with tolerance  
classes in accordance with DIN  
40803, Sheet 1, Point 3.4.2.1.:  
coarse  $\geq 0.9\text{mm}$   
moderate  $\geq 0.8\text{mm}$   
fine  $\geq 0.8\text{mm}$

Changeover Contact	Dimension a	Dimension b	Order Designation
4-section in-line switch	.812 [20.32]	.122 [3.1]	C42315-A1347-A204 <sup>6)</sup>
4-section in-line switch <sup>5)</sup>	.812 [20.32]	.213 [5.4]	C42315 -A1347-A304
12-section in-line switch	2.387 [60.62]	.122 [3.1]	C42315 -A1347-A212 <sup>6)</sup>
12-section in-line switch <sup>5)</sup>	2.387 [60.62]	.213 [5.4]	C42315 -A1347-A312

Note: The switches are delivered unhooked

### TOOLING

Description	Order Designation
Operating tools	C42407 -A78-A1

