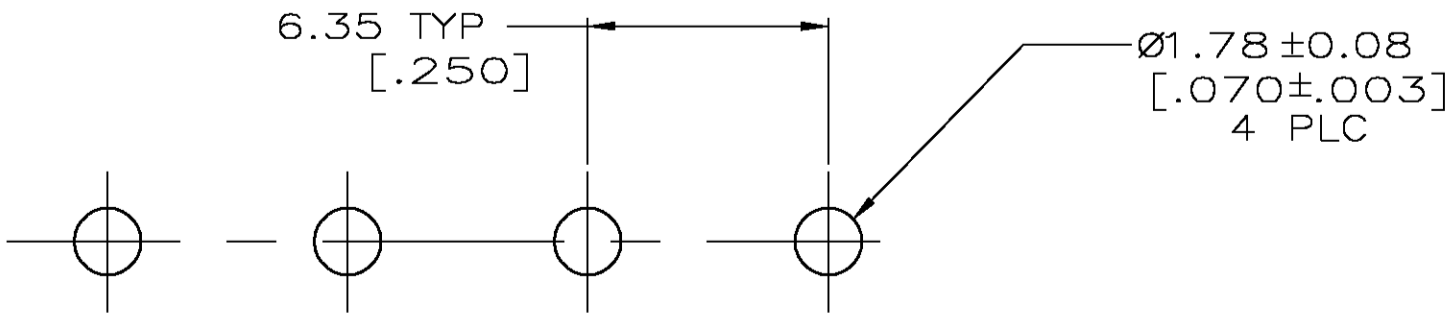
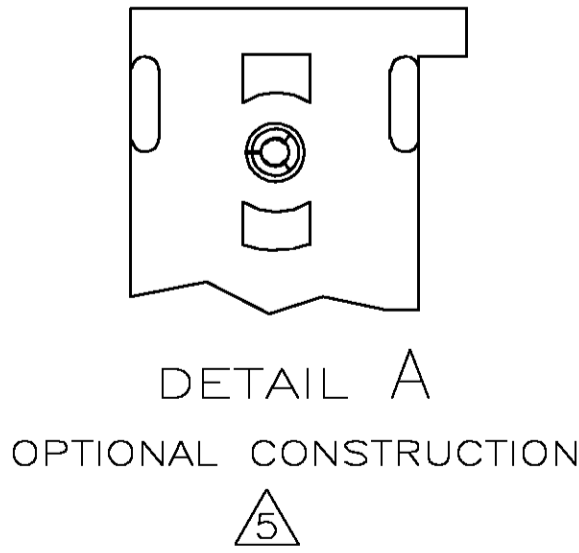
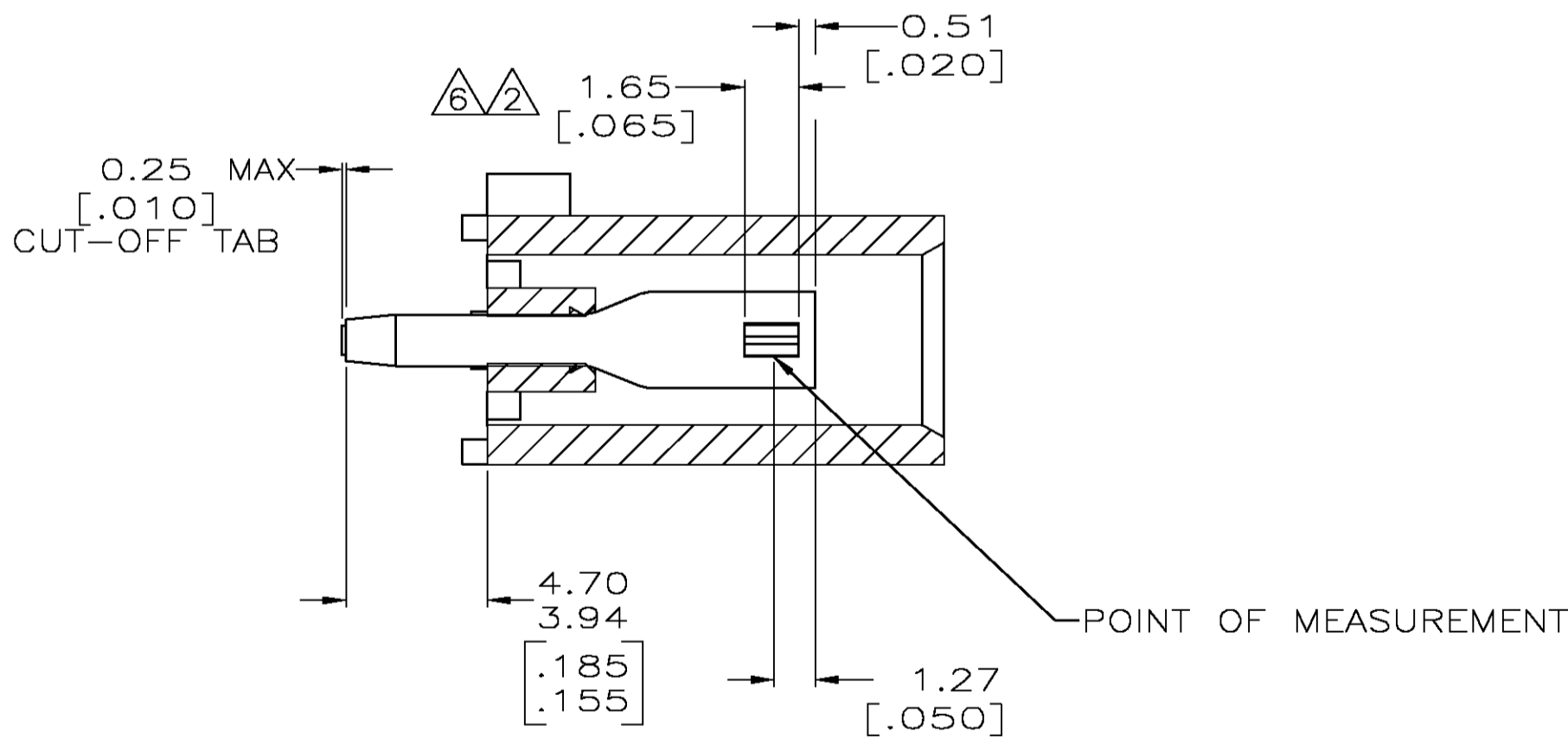
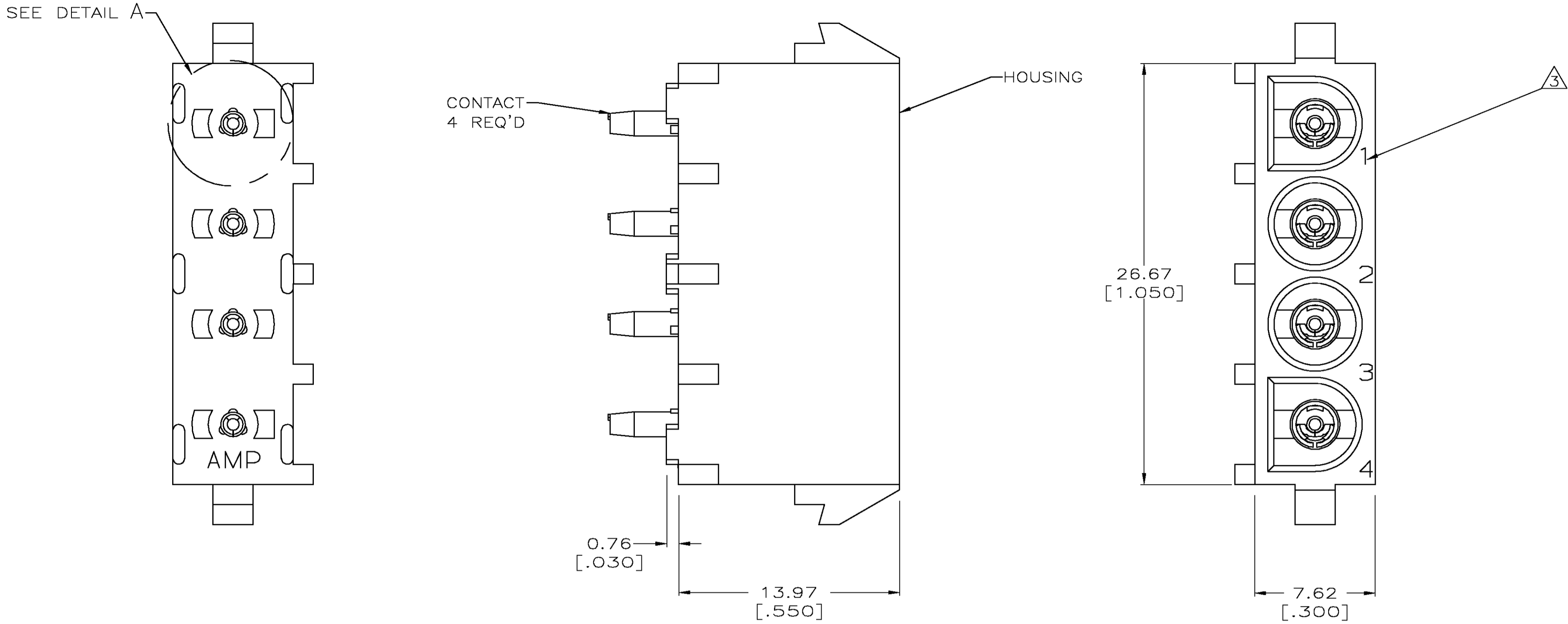
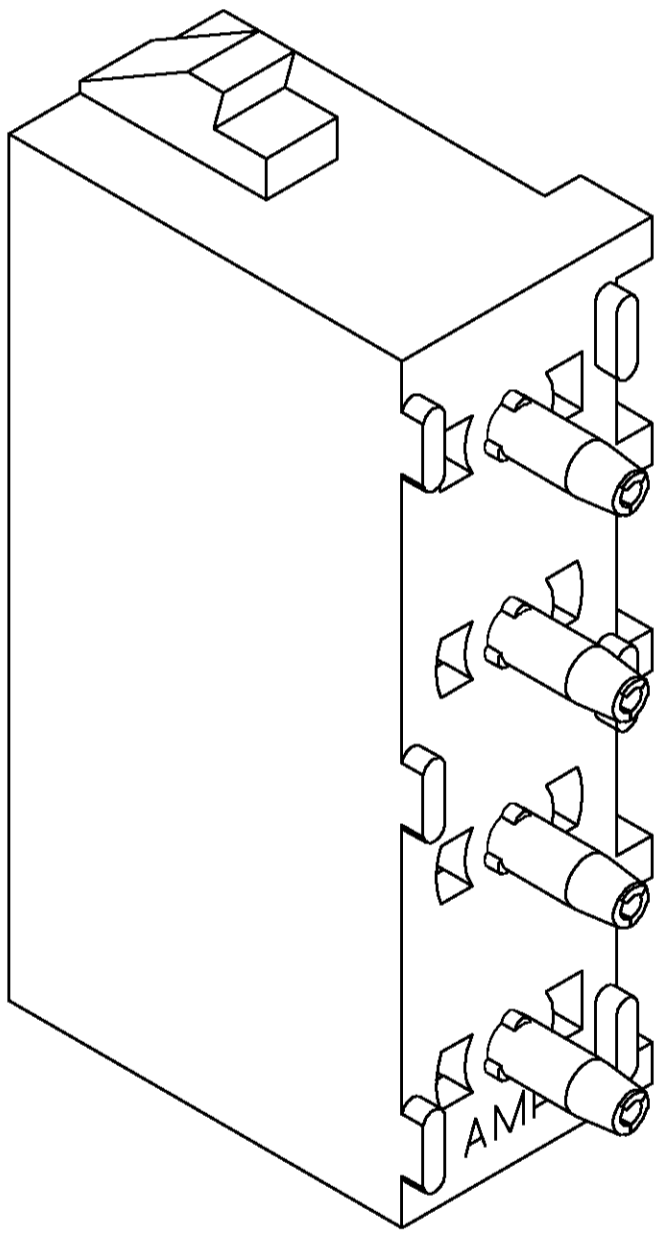


LOC	DIST	REVISIONS					
		P	LTR	DESCRIPTION	DATE	OWN	APVD
CM	00	N		REVISED PER EC 063B-1094-04	26JAN05	KW	SR

1. PARTS COMPLY TO AMP SOLDERABILITY SPECIFICATION 109-11-3.
2. CONTACT IS PLATED OVERALL WITH 0.00127 [.000050] NICKEL, THEN 0.00076 [.000030] GOLD OVER CONTACT LENGTH INDICATED AND MATTE TIN LEAD ON SOLDER TAIL END.
3. CIRCUIT IDENTIFICATION CHARACTERS ARE ADJACENT TO THE INDICATED CAVITIES, BUT LOCATION AND ORIENTATION MAY DIFFER FROM PRINT.
4. DIMENSIONS IN BRACKETS ARE IN INCHES.
5. DRAIN HOLES LOCATED AS SHOWN. OPTIONAL CONSTRUCTION - ALL DRAIN HOLES LOCATED 90° AS SHOWN IN DETAIL A.
6. CONTACT IS PLATED OVERALL WITH 0.00127 [.000050] NICKEL, THEN 0.00076 [.000030] GOLD OVER CONTACT LENGTH INDICATED AND MATTE TIN ON SOLDER TAIL END.



RECOMMENDED MOUNTING HOLE PATTERN
FOR 1.57 [.062] THICK P.C. BOARD



3-DIMENSIONAL MODEL
NTS

PHOSPHOR BRONZE, GOLD	NYLON,UL94V-2,NATURAL	350761-5
PHOSPHOR BRONZE, PRE-TIN	NYLON,UL94V-2,NATURAL	350761-4
PHOSPHOR BRONZE, GOLD	NYLON,UL94V-2,NATURAL	350761-3
CONTACT MATERIAL AND FINISH	HOUSING MATERIAL	PART NUMBER

THIS DRAWING IS A CONTROLLED DOCUMENT.			DN D. LEWIS	10-02-98	tyco Electronics	Tyco Electronics Corporation Greensboro, NC 27409		
DIMENSIONS: mm [INCHES]			CHK R. SWING	10-02-98		NAME SOCKET HEADER ASSEMBLY, 4 CIRCUIT UNIVERSAL MATE-N-LOK™ SIZE CAGE CODE DRAWING NO A1 00779 C=350761 CUSTOMER DRAWING SCALE 5:1 SHEET 1 of 1 REV N		
TOLERANCES UNLESS OTHERWISE SPECIFIED:			APVD M. TRULL	10-02-98				
0 PLC ± -			PRODUCT SPEC					
1 PLC ± -			APPLICATION SPEC					
2 PLC ± 0.13 [.005]			WEIGHT -					
3 PLC ± -			DRAWING NO					
4 PLC ± -			RESTRICTED TO					
ANGLES ± 0.30°			A1 00779 C=350761					
FINISH			CUSTOMER DRAWING					
MATERIAL: SEE TABLE			SEE TABLE					

METRIC