

# PRODUCT NUMBER

71918-YXX

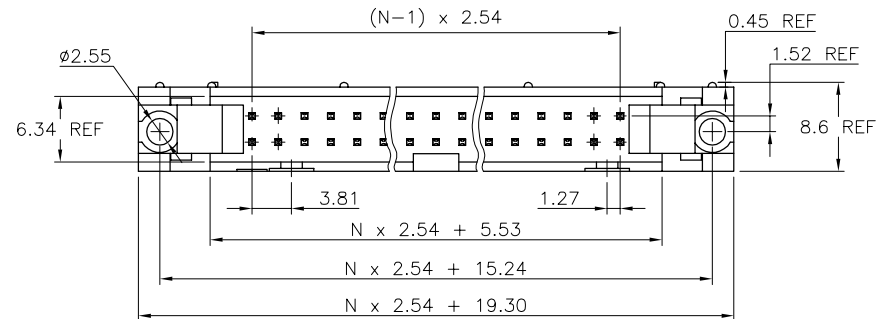
TOTAL NB OF POSITIONS 06 TO 64

LATCHING

0= WITHOUT LATCH

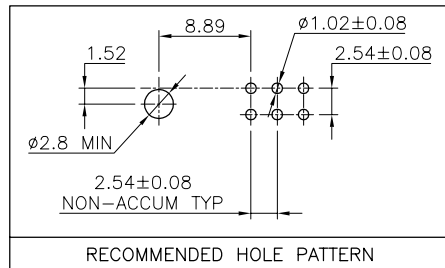
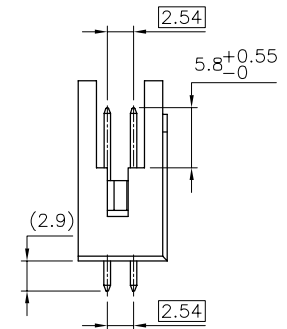
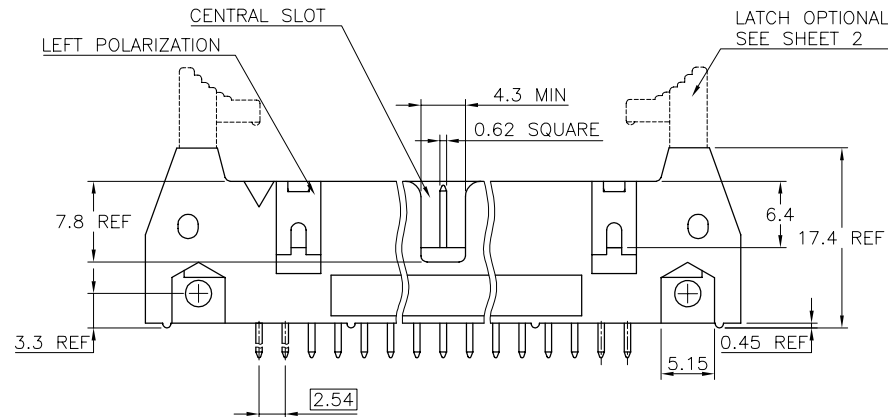
1= STANDARD LATCH

2= LOW PROFILE LATCH



## NOTES:

- 1 - HOUSING MAT'L : GLASS FILLED THERMOPLASTIC. UL94V-0 COLOR: GREY
- 2 - PIN MATERIAL : PHOSPHOR BRONZE
- 3 - PRODUCT PACKAGED IN TUBES
- 4 - 40N MIN LATCH RETENTION FORCE AT FIRST EXTRACTION
- 5 - TO DETERMINE DIMENSIONS :  
N = NUMBER OF POSITIONS PER ROW  
EXAMPLE : 8 POS  $N \times 2.54 = 20.32\text{mm}$
- 6 - NO CENTRAL SLOT ON POSITIONS 6 & 8
- 7 - NO LEFT POLARIZATION ON POSITIONS 06, 08, 10, 14.



RECOMMENDED HOLE PATTERN

mat'l. code				tolerances unless otherwise specified		CUSTOMER COPY		FCI ELECTRONICS	
SEE NOTES								www.fciconnect.com	
ltr	ecn no	dr	date						
H	F70143	PNZ	97.02.25	linear		projection		title	
J	F10120	DLE	01.01.24					SHR.EL.HEADER	
K	F10149	LMU	01.02.22	angles				STR DR TMT	
L	F10309	DLE	01.05.10	dr	D.LE	01.01.24	mm	product family	QUICKIE
M	F03-0257	LMU	03.08.31	engr	JM.C	01.01.24		code	213
				chr	JF.N	01.01.24		size	dwg no
				appd	JM.C	01.01.24	scale	2:1	sheet
sheet	revision	M	L						
index	sheet	1	2						

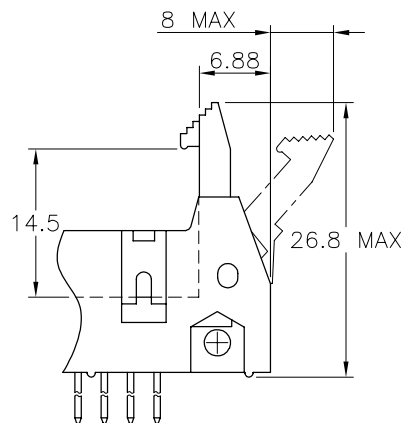
CORE RANGE	
LATCHING	Nbr OF POSITIONS
1	06
1	08
1	10
1	14
1	16
1	18
1	20
1	26
1	30
1	34
1	40
1	44
1	50
1	60
1	64

#### LATCHING

0 = WITHOUT LATCHING  
 1 = STANDARD LATCH  
 2 = LOW PROFILE LATCH

#### PLATING

0.76µm GOLD ON CONTACT AREA  
 3.81µm TIN/LEAD ON TAIL



1 = STANDARD LATCH

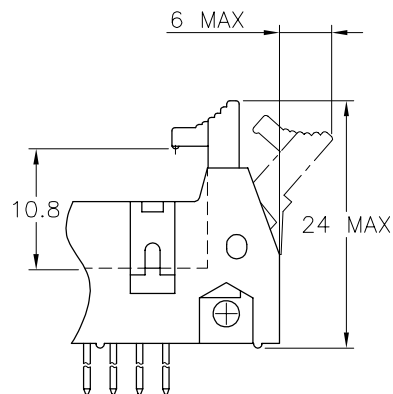
CATALOGUE RANGE	
LATCHING	Nbr OF POSITIONS
0/2	06
0/2	08
0/2	10
0/2	14
0/2	16
0/2	18
0/2	20
0/2	26
0/2	30
0/2	34
0/2	40
0/2	44
0/2	50
0/2	60
0/2	64

#### LATCHING




0 = WITHOUT LATCHING  
 1 = STANDARD LATCH  
 2 = LOW PROFILE LATCH

#### PLATING

0.76µm GOLD ON CONTACT AREA  
 3.81µm TIN/LEAD ON TAIL



2 = LOW PROFILE LATCH

mat'l. code				tolerances unless otherwise specified			CUSTOMER COPY		 <b>ELECTRONICS</b> www.fciconnect.com				
ltr	ecn no	dr	date	linear				projection 	title <b>SHR.EL.HEADER</b> <b>STR DR TMT</b>				
H	F70143	PNZ	97.02.25										
J	F10120	DLE	01.01.24										
K	F10149	LMU	01.02.22										
L	F10309	DLE	01.05.10	angles				 mm	product family		QUICKIE	code	
				engr	JM.C	01.01.24	scale 2:1		size	dwg no	A3	71918	sheet 2 of -
				chr	JF.N	01.01.24							
				appd	JM.C	01.01.24							
sheet index		revision sheet											